

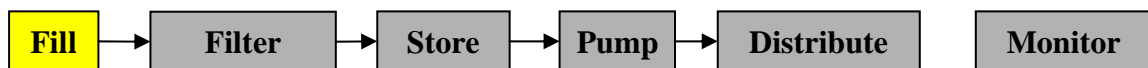
Easilube Product Manual

Manual Number: 06501429A

Manual Date: May 2013

EASILUBE®

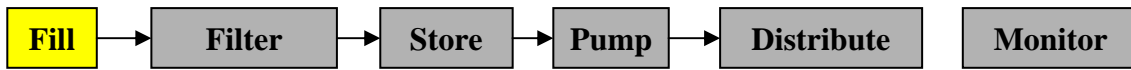
V96FP Fill Point



Contents

Reference Number	Topic	Page Number
1	The V96FP Bulk-Fill Point	3
1.1	General Description	3
2	Product Details	4
2.1	Assembly and Part Numbers	4
2.2	Procedure	5

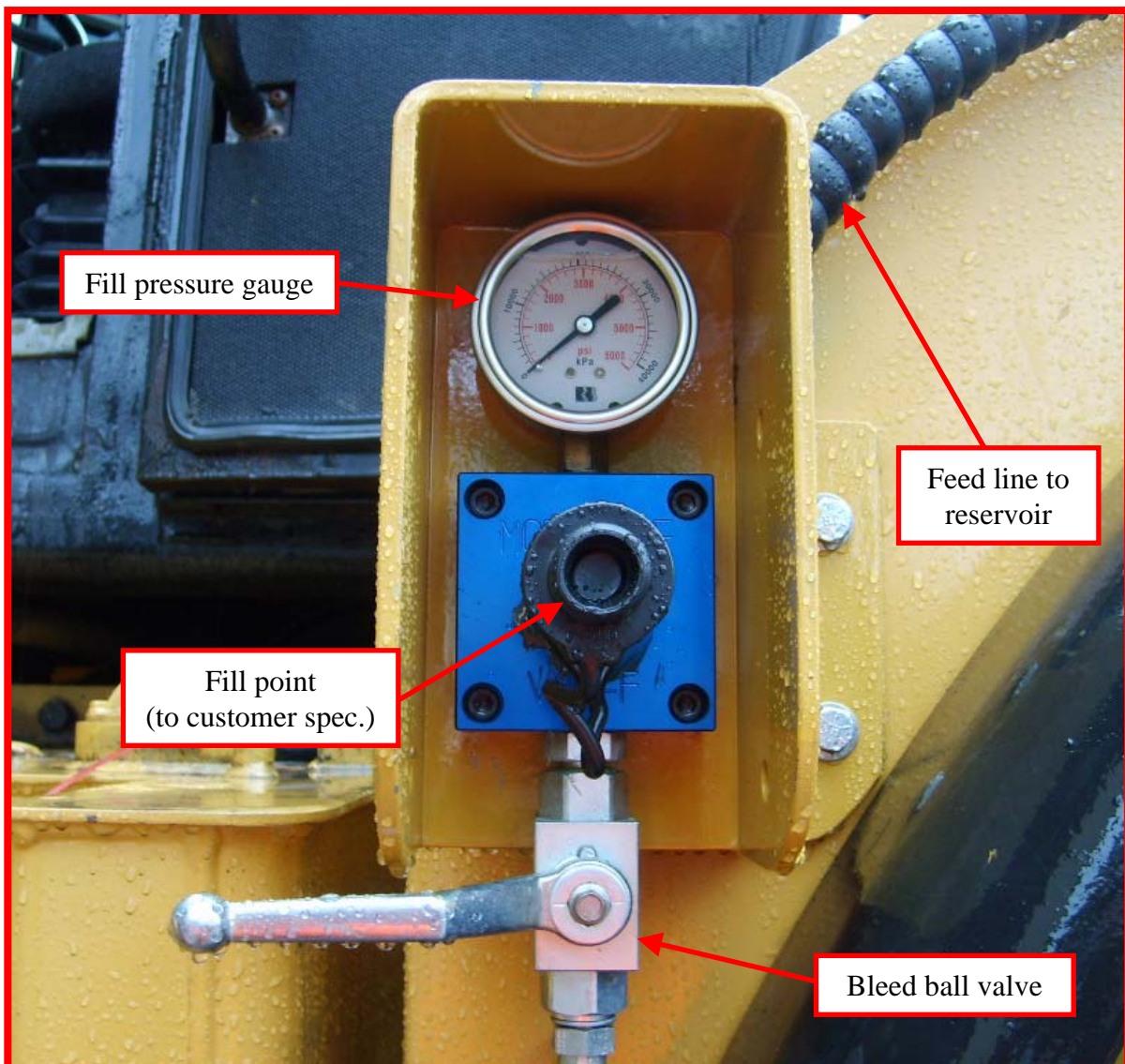
For further system information, please refer to 'Easilube Background, Installation and Commissioning' and 'Easilube Diagnostics' manuals



1. The V96FP Bulk-Fill Point

1.1 General Description

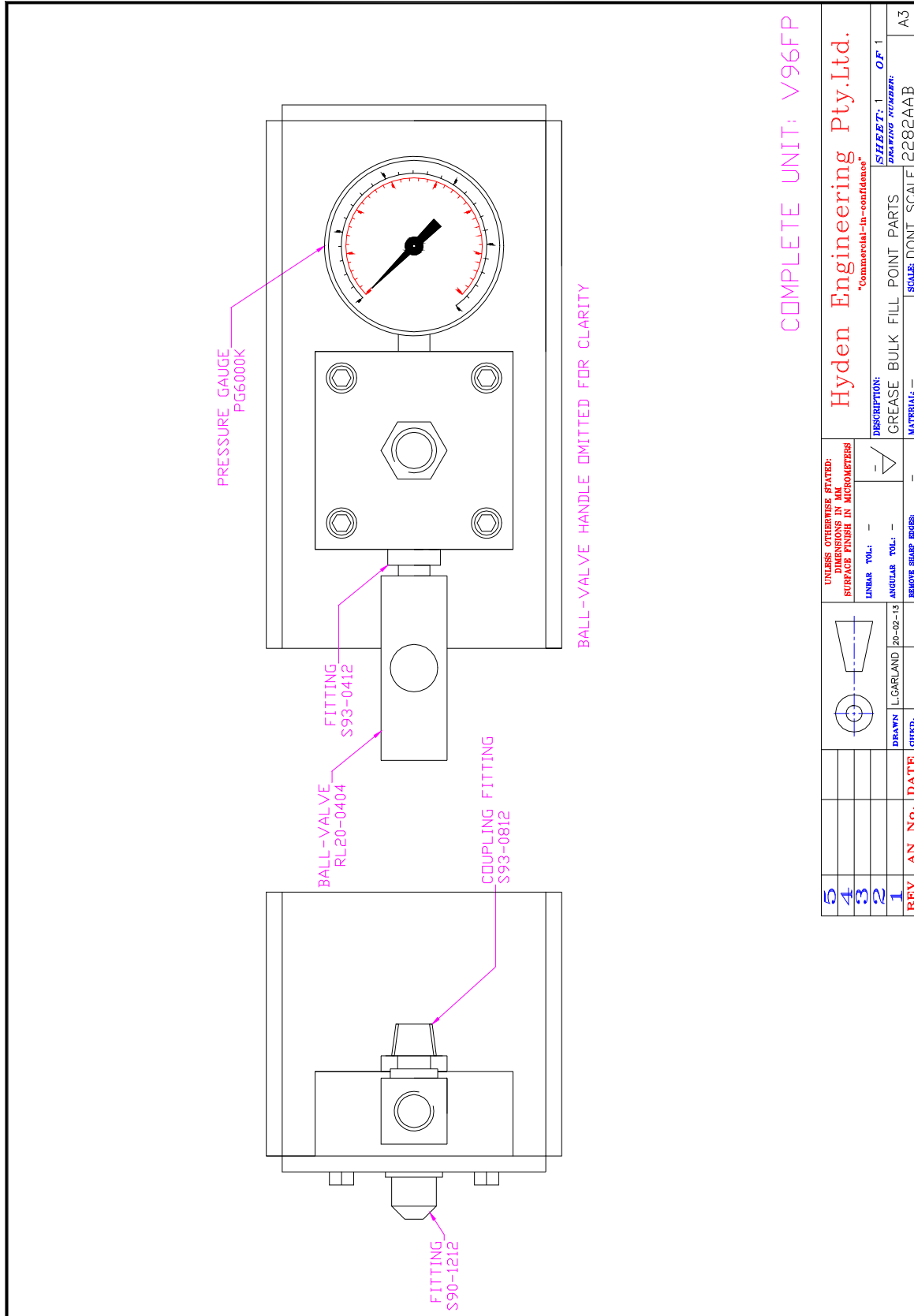
The V96FP bulk-fill point allows safe filling of an Easilube reservoir from a convenient location on a machine. The fill point is typically fitted with a customer specified coupling so that filling may be done from a convenient source such as a mobile service truck. The reservoir does not need to be visible during the filling process as a gauge is fitted to alert the operator when the reservoir is full. After filling, the residual pressure in the feed-line may be safely bled by opening the ball valve.



2 Product Details

2.1 Assembly and Part Numbers

Please contact Hyden Engineering for current prices and availability of components.
 Note: S90-1212 and S93-0812 fittings are not included in V96FP assembly.



9				UNLESS OTHERWISE STATED: DIMENSIONS IN MM SURFACE FINISH IN MICROMETERS	LINEAR TOL: -	ANGULAR TOL: -	SHAPE SHARP EDGES	DESCRIPTION: GREASE BULK FILL POINT PARTS	SHEET: 1 OF 1	DRAWING NUMBER: 2282AAB
4										
3										
2										
1										
REV	AN	NO.	DATE	DRW'N	LCARLAND	20-02-13				
				CHKD.						
								MATERIAL: -	SCALE: DONT SCALE	A3

Hyden Engineering Pty.Ltd.
 "Commercial-in-confidence"

2.2 Procedure

Step 1) Ensure bleed ball valve is closed

Step 2) Connect bulk-fill line to coupling

Step 3) Start bulk-fill pump, a spike in pressure as read on gauge indicates completion of filling (fill time can vary based on reservoir size and fill rate).

Step 4) Turn off bulk fill pump

Step 5) Open bleed ball valve to vent pressure from feed-line to atmosphere

Step 6) Disconnect bulk-fill line from coupling

