



Mining Enterprises Pty Ltd



PRODUCT BULLETIN: DUSTSET 2020 Concentrate

FLYING DUST IS A MAJOR WHS & Environmental ISSUE!

DUSTSET 2020 Concentrate is a highly effective wetting solution capable of reducing water surface tension by more than 80% at ratios of up to 1:4000



High surface tension

Water beading

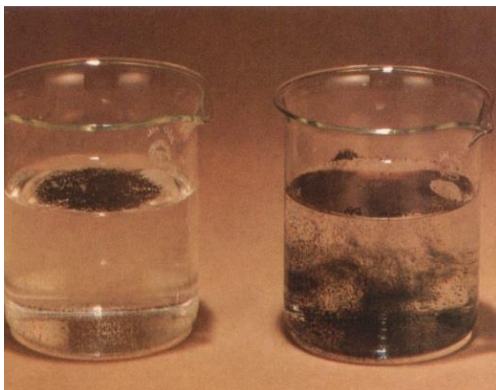
Particles float



Low surface tension

Water wrapping

Particles sink



DUSTSET 2020 Concentrate is:

- Non hazardous
- Non flammable
- Non toxic
- Biodegradable
- Neutral pH
- Non corrosive
- Environment and user friendly
- Low hazard to animals and plants

DUSTSET 2020 Concentrate is available in the following packaging:

- 5L Bottle
- 15L Cube
- 200L Drum
- 1000L IBC (bulky)



Dated August 2015

Mining Enterprises Pty Ltd
246 Tomboye Road, Braidwood NSW 2622
ABN: 11 162 709 828



Mining Enterprises Pty Ltd



PRODUCT BULLETIN: DUSTSET 2020 Concentrate

DUSTSET 2020 Concentrate keeps dust down to earth – where it belongs!

Typical Application:

- Mine Haul Roads – such as coal, other ore mines & quarries
- Public Roads – when under construction or repair
- Stockpiles – where dust from coal or other minerals / materials must be minimised
- Materials Handling – conveyors, hoppers, discharge chutes, crusher stations and transfer points
- Underground – shearers, continuous miners, drills, declines
- Power Stations – for ash dust control



Underground dust suppression



Stockpile dust control

Economical Application:

Dosing systems are available to meter DUSTSET 2020 Concentrate to fine tune dose based on economics due to site situation factors such as volume and weight of traffic, road conditions, seasonal weather etc.

Truck metering device ensures accurate automatic dosing with adjustable ratios.

Dated August 2015

Mining Enterprises Pty Ltd
246 Tomboye Road, Braidwood NSW 2622
ABN: 11 162 709 828



Mining Enterprises Pty Ltd



PRODUCT BULLETIN: DUSTSET 2020 Concentrate

DUSTSET 2020 Concentrate reduces water use by as much as 50%*

Previous Dustset trial/ use

NSW	QLD	SA	NT	WA
<ul style="list-style-type: none"> • Stockton Borehole • Newstan • Myuna Colliery • Westcliffe • Coalcliffe • South Buli • Westcliffe • Hunter Valley No.1 • United Collieries • North Broken Hill Mine • Costain • Koorangang coal Loader • Boral Quarry • Alcan Smelter • Warkworth Mining • Greenleaf Fertilizer 	<ul style="list-style-type: none"> • BHP Utah Minerals – Saraji Mine – Norwich Park – Blackwater • BHP Utah Coal Ltd 	<ul style="list-style-type: none"> • Roxby Downs – Olympic Dam Uranium Mine 	<ul style="list-style-type: none"> • Pine Creek 	<ul style="list-style-type: none"> • Sons of Gwalia Gold – Thiess Contractors • Mt Percy Gold Mine – (Bell Bros) • BHP Gold
Interest Expressed by:	RTA	NSW Grain Handling Authority		

**Dependant on individual site conditions*



Dated August 2015



Mining Enterprises Pty Ltd



PRODUCT BULLETIN: DUSTSET 2020 Concentrate

Why should you use DUSTSET 2020 Concentrate?

Use Less Water – Due to its exceptional wetting characteristics, DUSTSET 2020 Concentrate will reduce water requirements at least 50% in situations such as haul roads. This allows tankers to cover up to twice the mine site area or alternatively reduce tanker requirements.

Saturates Deeply – DUSTSET 2020 Concentrate will saturate roads and stockpiles to a depth of 50 mm or more and retaining a moist surface and substarata moisture in high temperatures and high winds for prolonged periods. Does not require the road to be preconditioned by scarping, ploughing, breaking up or loosing in either above ground or below surface applications and improves the compaction condition of haul roads.

Reduces Respirable Dust – DUSTSET 2020 Concentrate reduces dust in underground mines by more than 50% and visible dust almost totally.

Further advantages –

- Contains anti-foaming agent
- Will not interfere with C-I-L and C-I-P extraction process or “downstream” effects in coal handling preparation plants etc.
- Rapid wetting of fine dust particles is greatly enhanced in dynamic cutting, crushing or handling to prevent labile dust particles escaping into the air.
- DUSTSET 2020 Concentrate keeps spray nozzles, water lines and equipment from rusting and corroding with no adverse reaction on hydraulic fluids or seals
- Completely miscible without agitating or stirring
- Lower freight cost

Further information – Information and demonstration of cost saving and reduction in health risks and nuisance factors of dust, please contact Carl Dembeck 0413 348552 or Jane Charley 0438 499 655

Dated August 2015

Mining Enterprises Pty Ltd
246 Tomboye Road, Braidwood NSW 2622
ABN: 11 162 709 828
