



— Innovative, Elegant & Robust Solutions —

Hyden Engineering Pty Limited  
1/48 Racecourse Road  
RUTHERFORD NSW 2320  
Telephone: (02) 4932 0111  
Facsimile: (02) 4932 0222  
E-mail: [hyden@hydeneng.com.au](mailto:hyden@hydeneng.com.au)

ABN: 17 129 010 902

## ENVIROSPRAY Manual

Manual Number: 06500978A

Manual Date: June 2011

# ENVIROSPRAY®

## Diagnostics



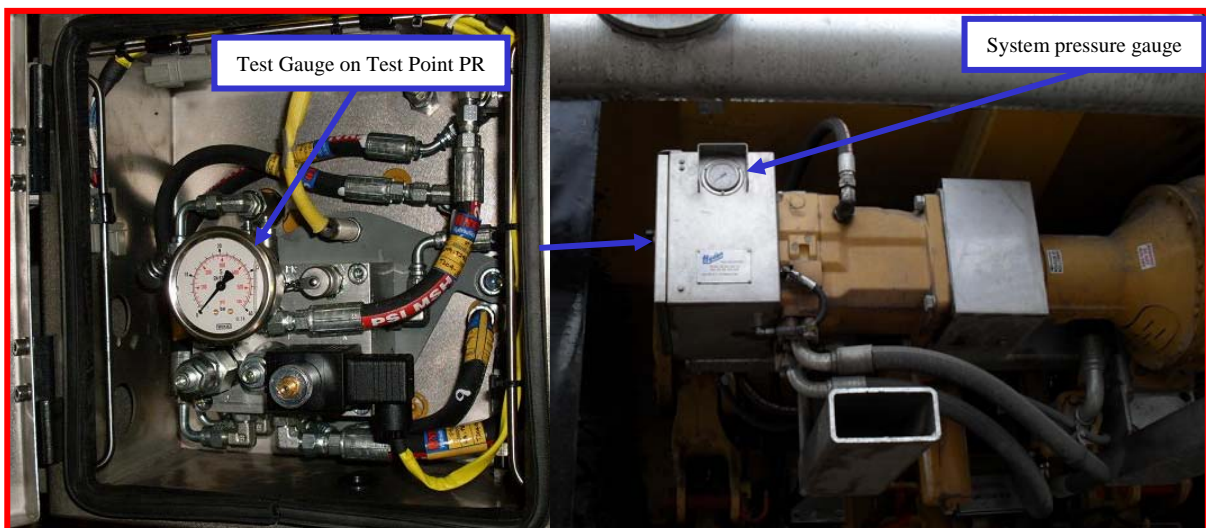
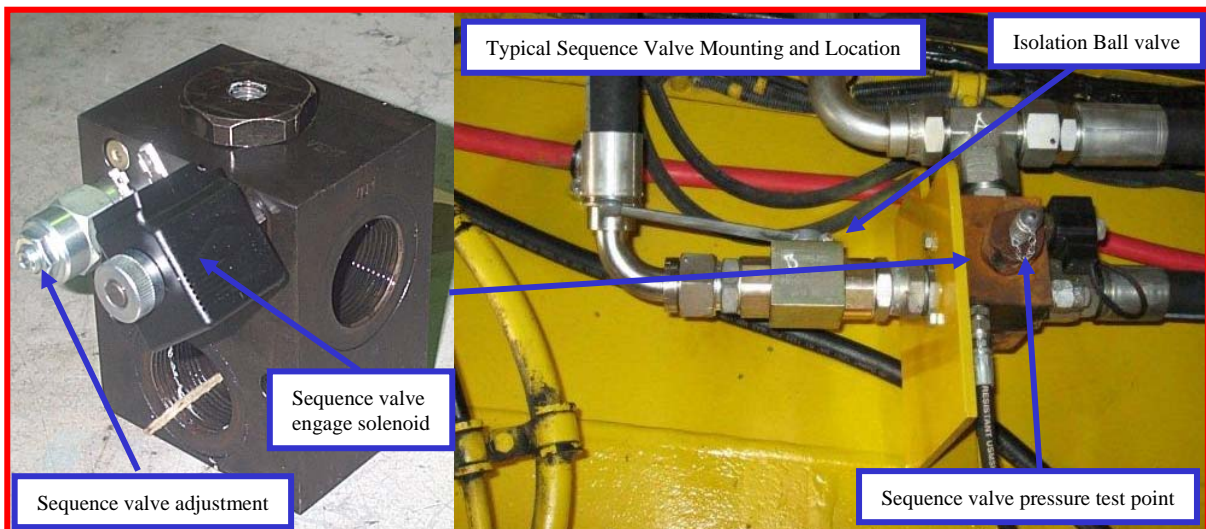
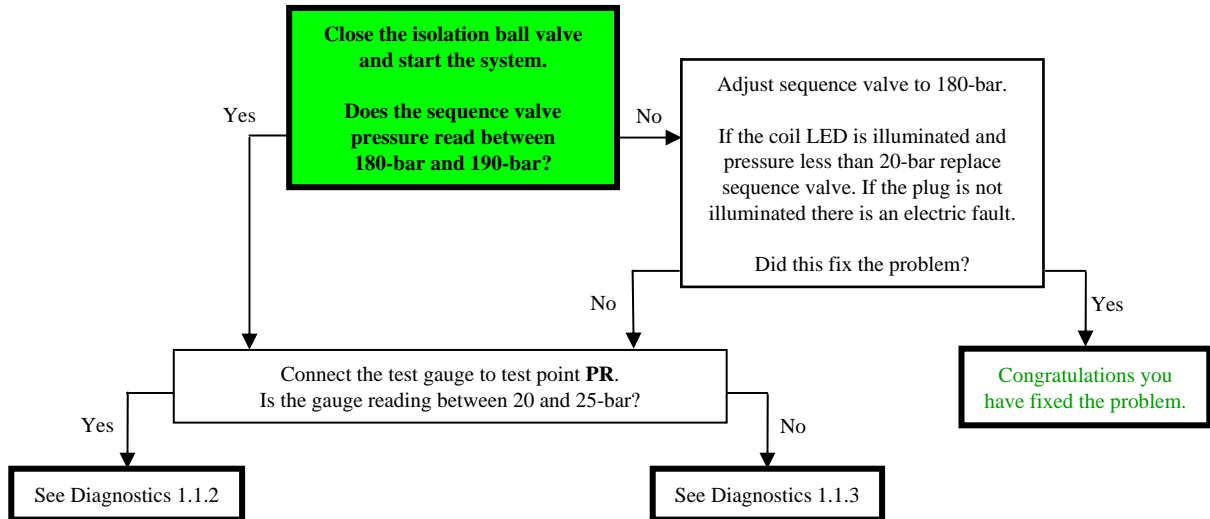
# Contents

Reference Number	Topic	Page Number
1	System Diagnostics	3
1.1	Water Pump Module & Sequence Valve	3
1.1.1	System Diagnostics	3
1.1.2	System Diagnostics	4
1.1.2	System Diagnostics	5
1.2	Spray Box Control	6
1.2.1	Spray Head leaking or not closing	6
1.2.2	Spray Head not opening	7
1.3	Foam System	8
1.3.1	System Diagnostics	8
1.4	Remote Cannon	9
1.4.1	Remote Cannon Water Control	9
1.4.2	Remote Cannon Left Control	10
1.4.3	Remote Cannon Right Control	11
1.4.4	Remote Cannon Jet Control	12
1.4.5	Remote Cannon Fog Control	13
1.4.6	Remote Cannon Down Control	14
1.4.7	Remote Cannon Up Control	15
2	Electric System Diagnostics	16
2.1	Spray System	16
2.1.1	Spray System wont start	16
2.1.2	Left Spray/s not working	17
2.1.3	Centre Spray not working	18
2.1.4	Right Spray/s not working	19
2.2	Cannon System	20
2.2.1	System Wont Start	20
2.3	Foot Pedal	21
2.3.1	Foot Pedal wont work	21
2.4	Foam System	22
2.4.1	System wont start	22
2.5	AUX systems	23
2.5.1	System wont start	23
2.6	Spot Spray system	24
2.6.1	System wont start	24
2.7	Road Speed system	25
2.7.1	System wont start	25

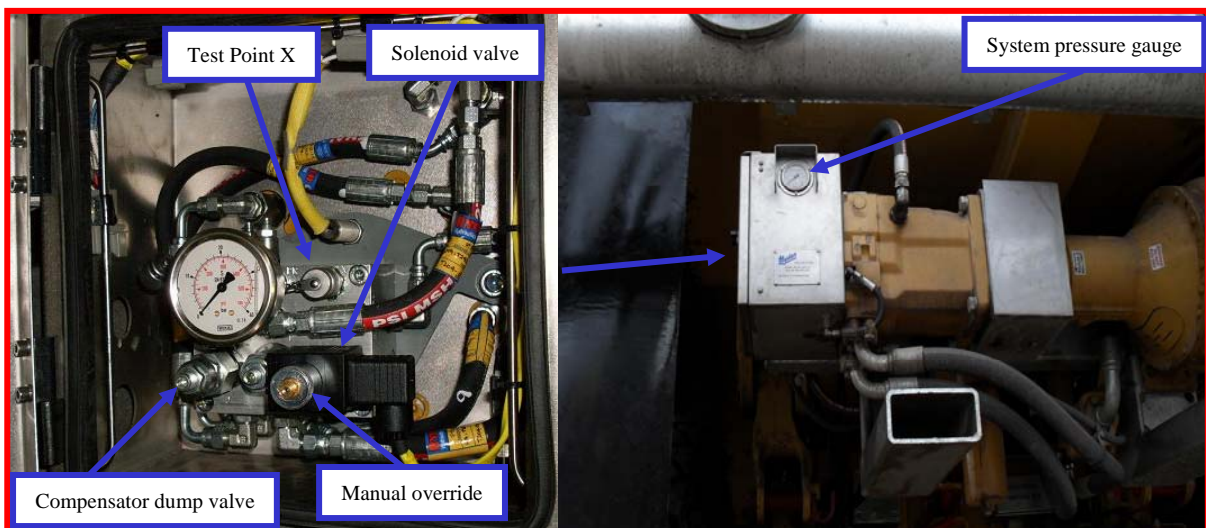
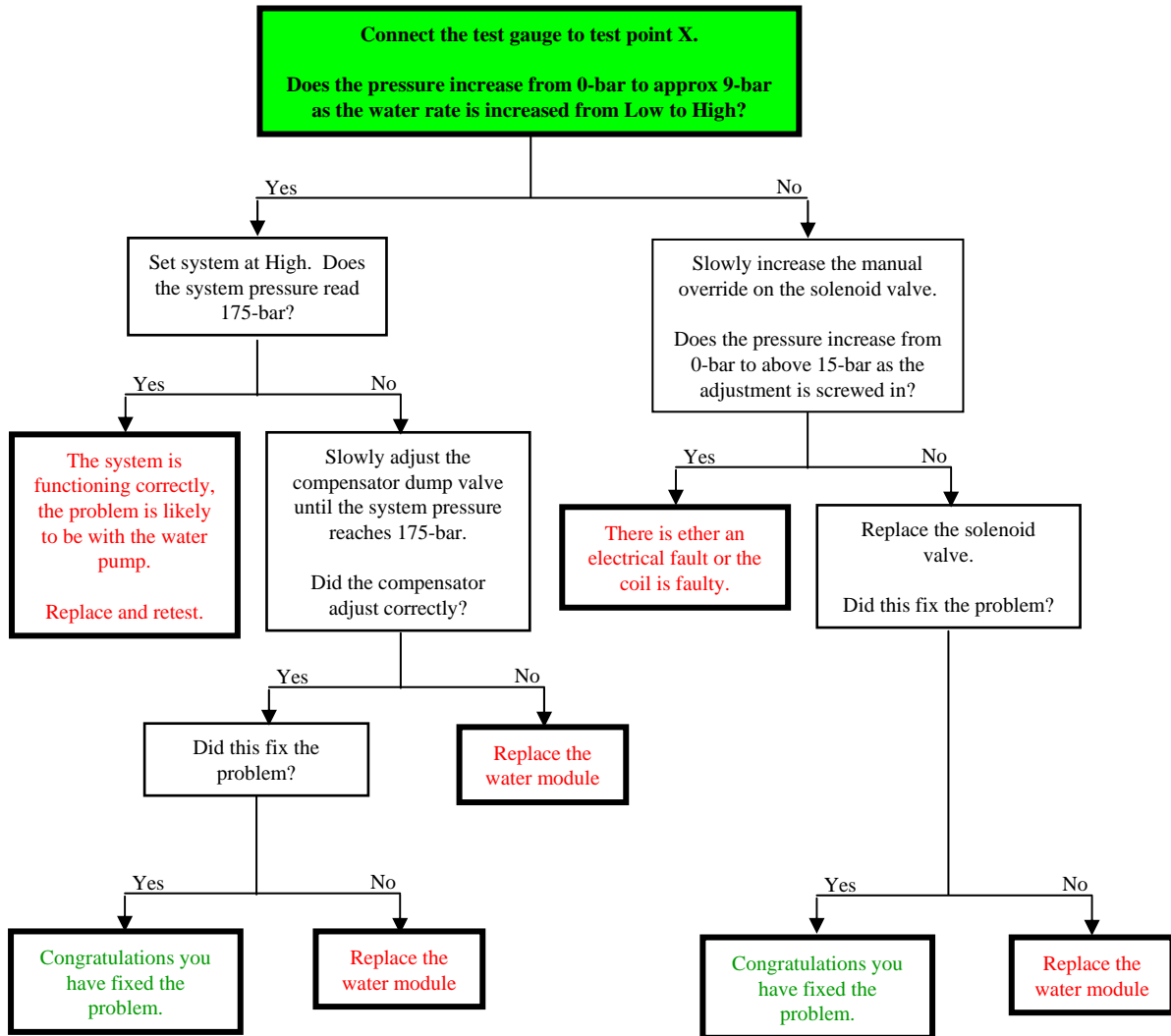
# 1 System Diagnostics

## 1.1 Water Pump Module & Sequence valve

### 1.1.1 System diagnostics

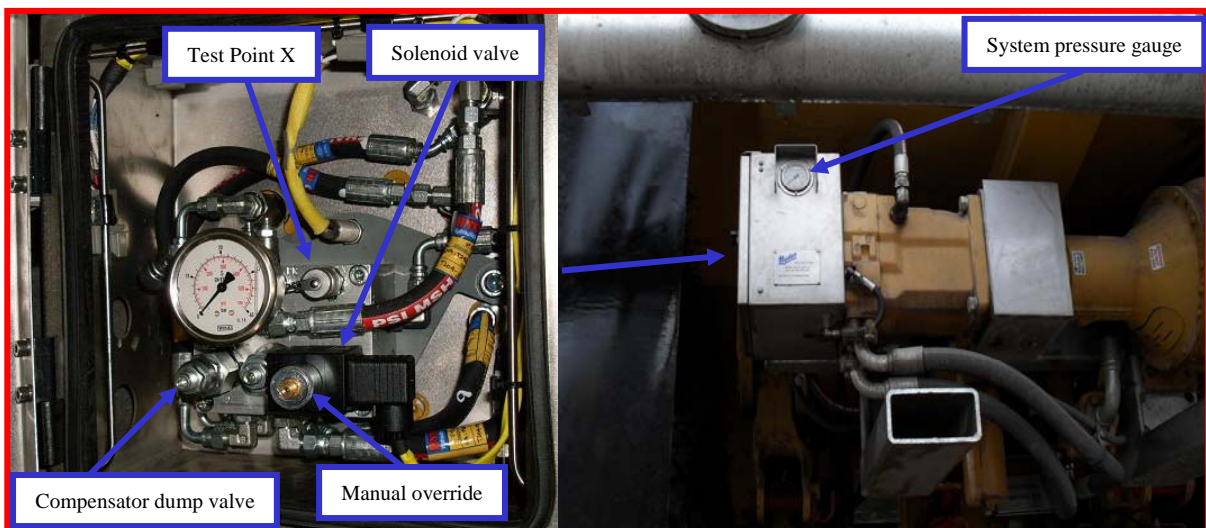
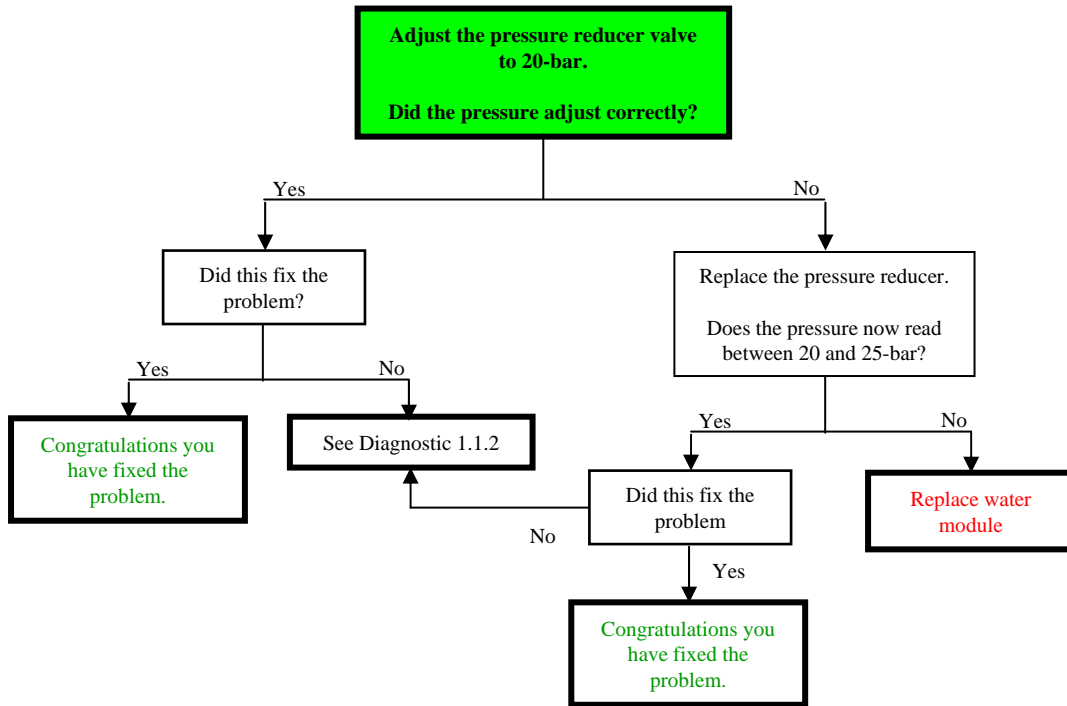


### 1.1.2 System diagnostics



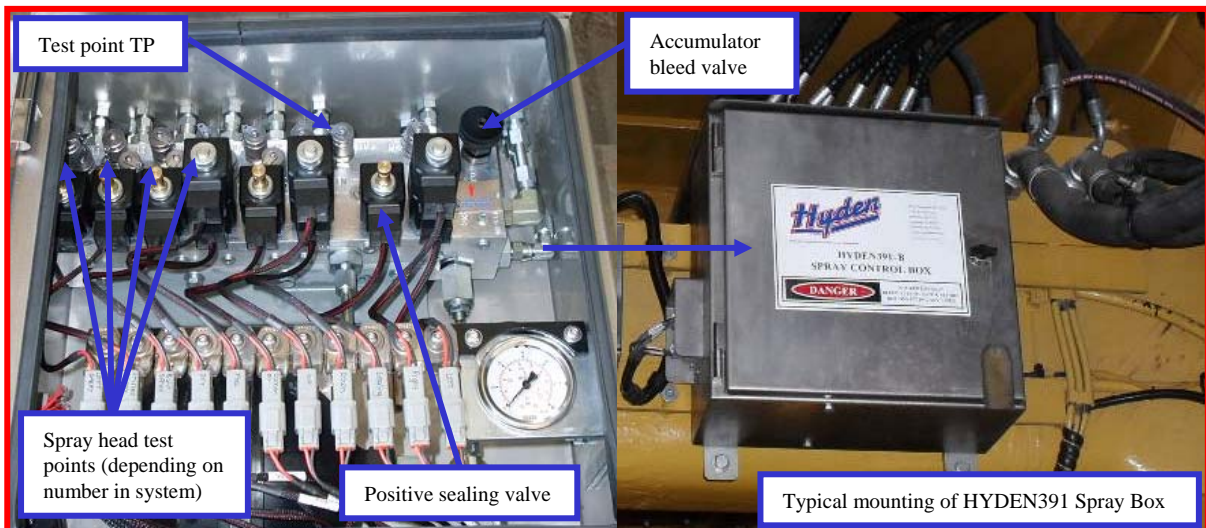
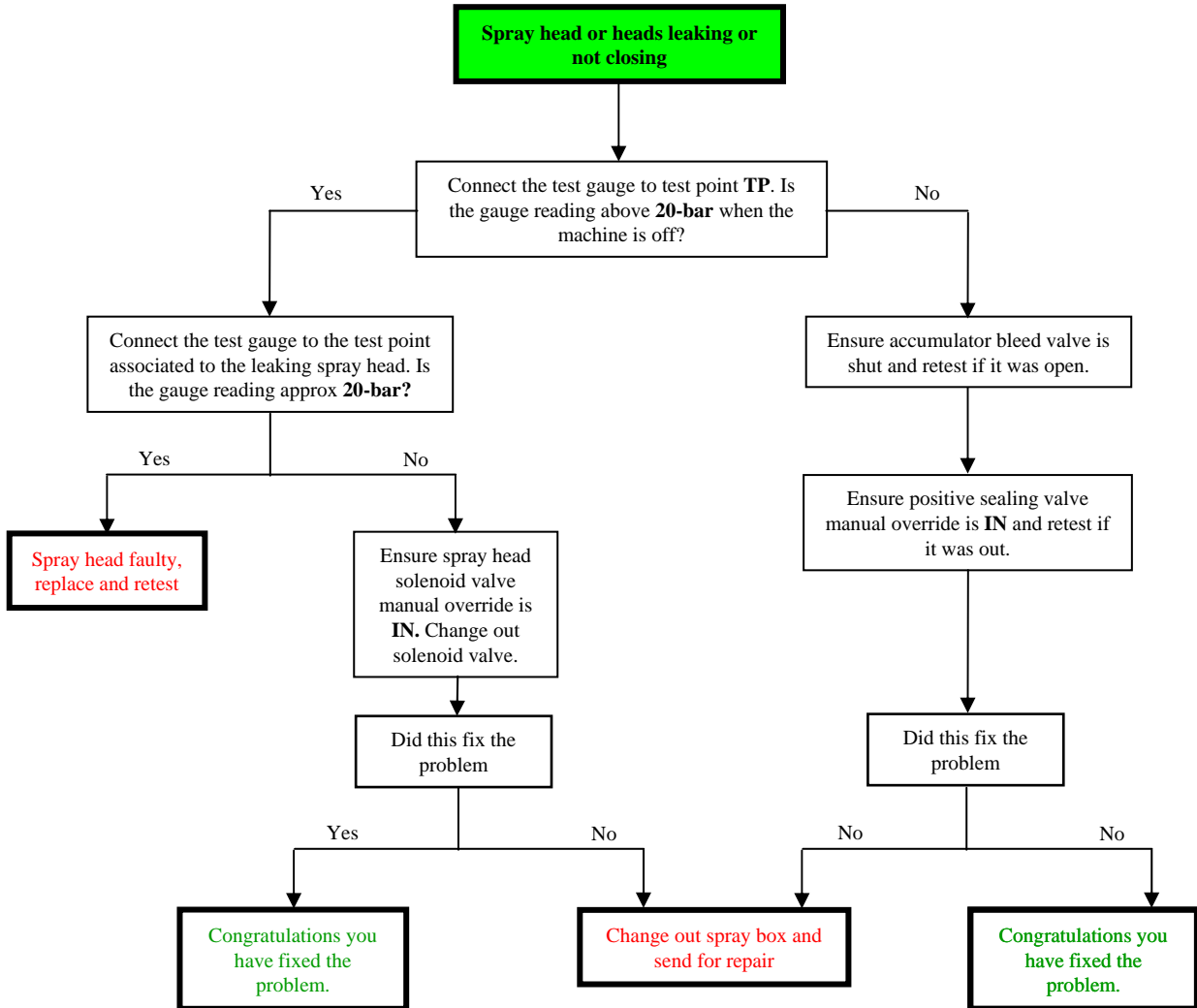


### 1.1.3 System diagnostics

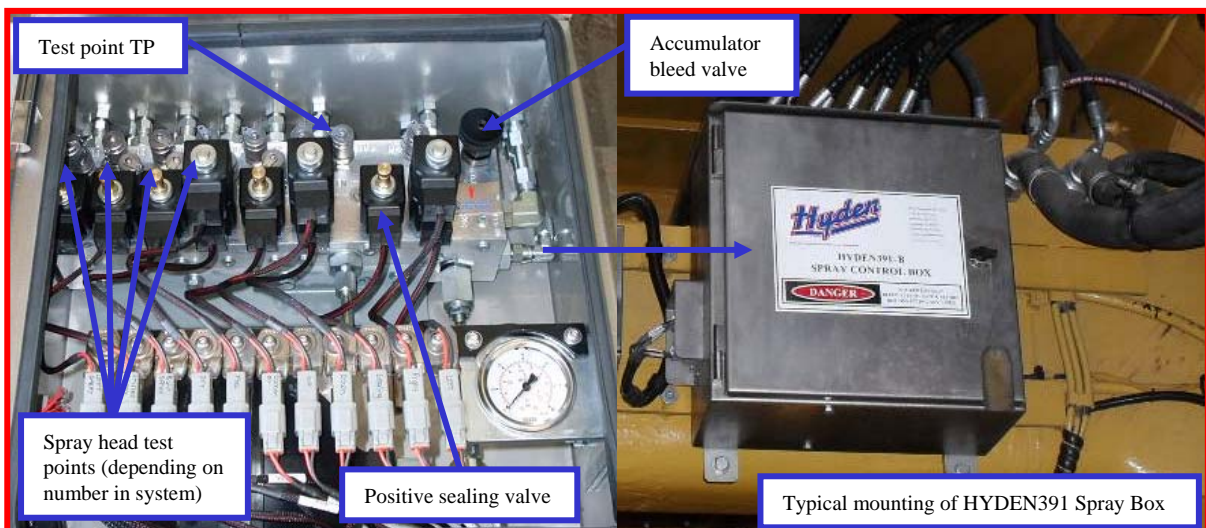
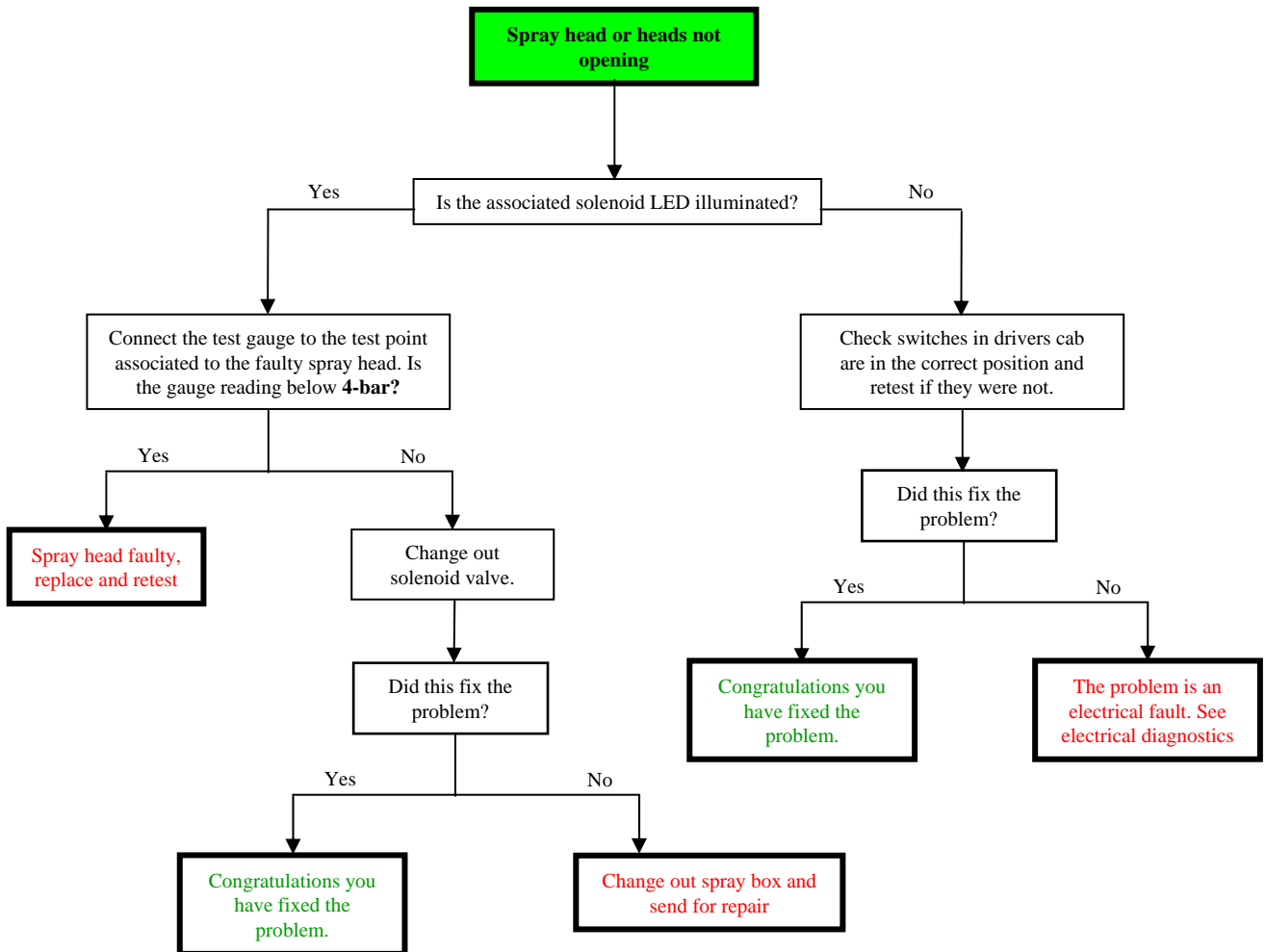


## 1.2 Spray Control Box

### 1.2.1 Spray head leaking or not closing

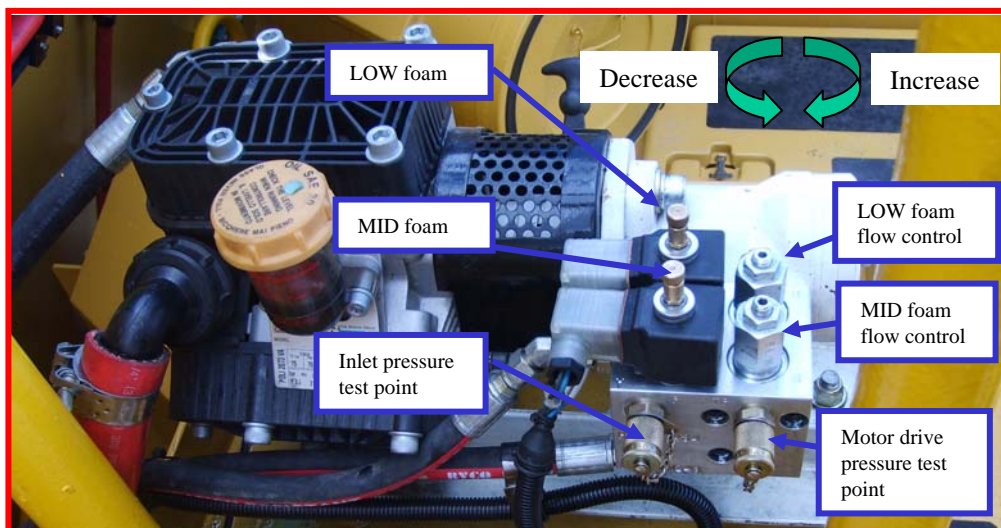
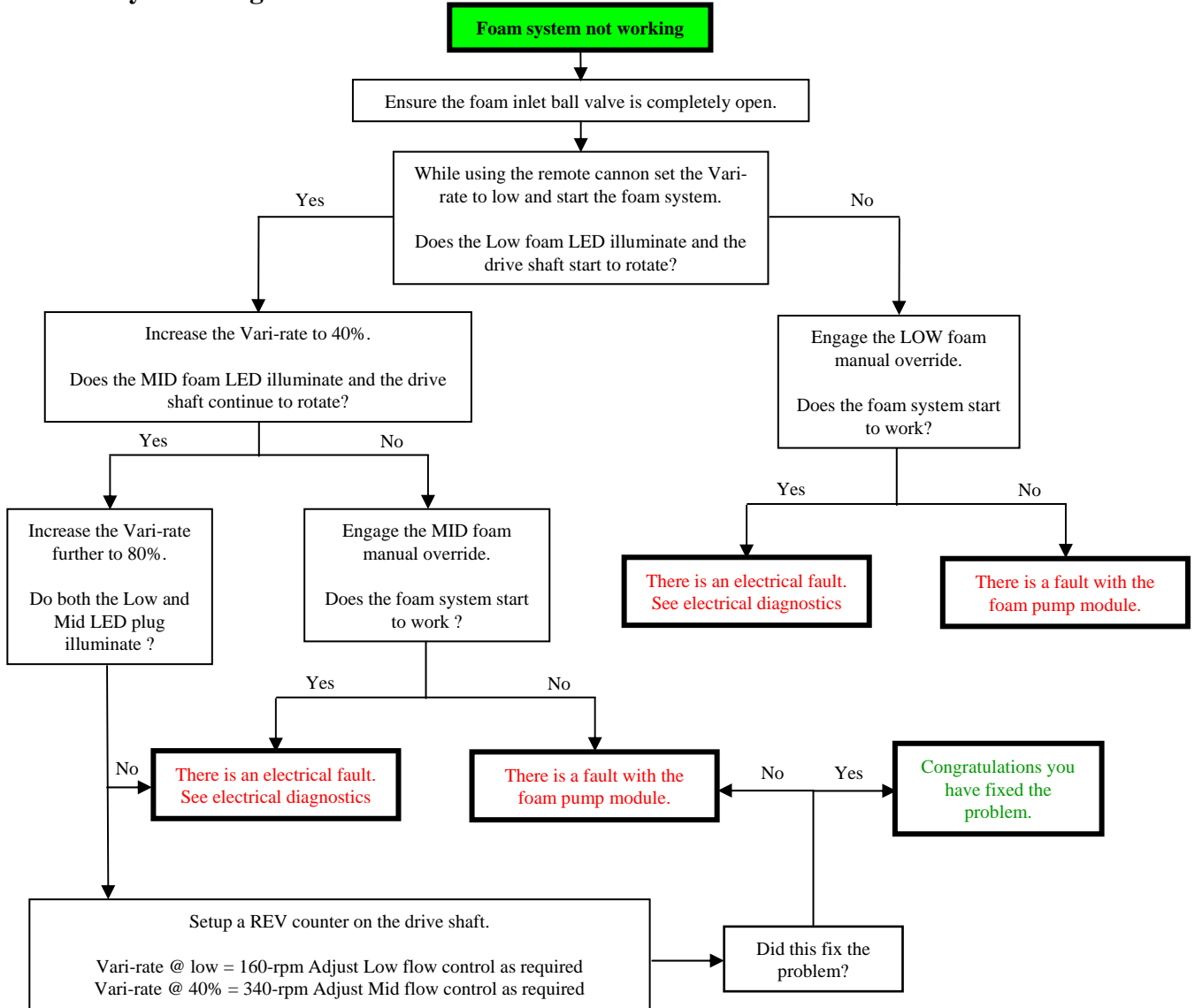


### 1.2.2 Spray heads not opening



### 1.3 Foam system

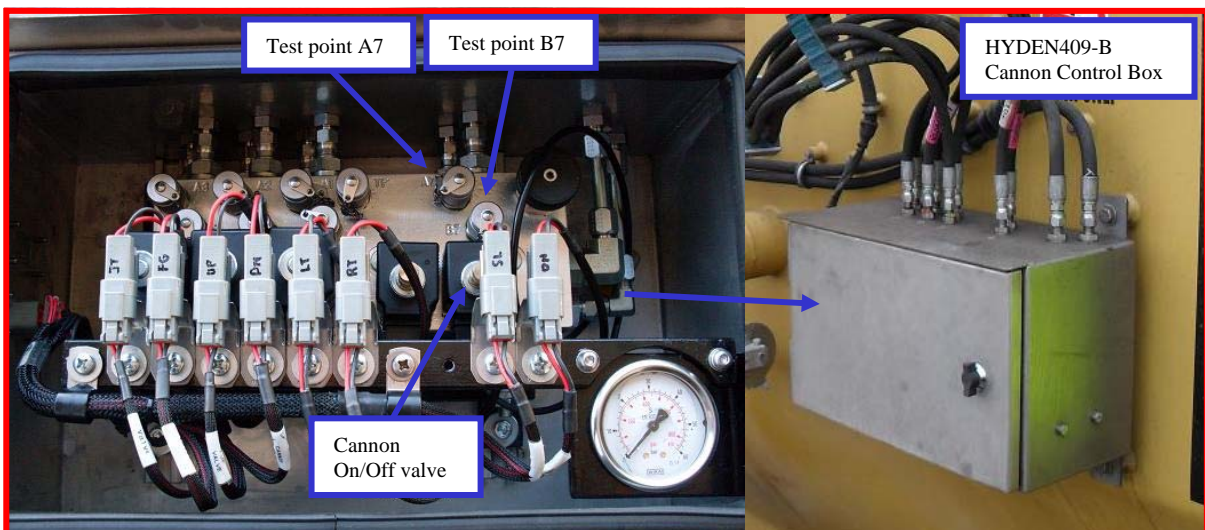
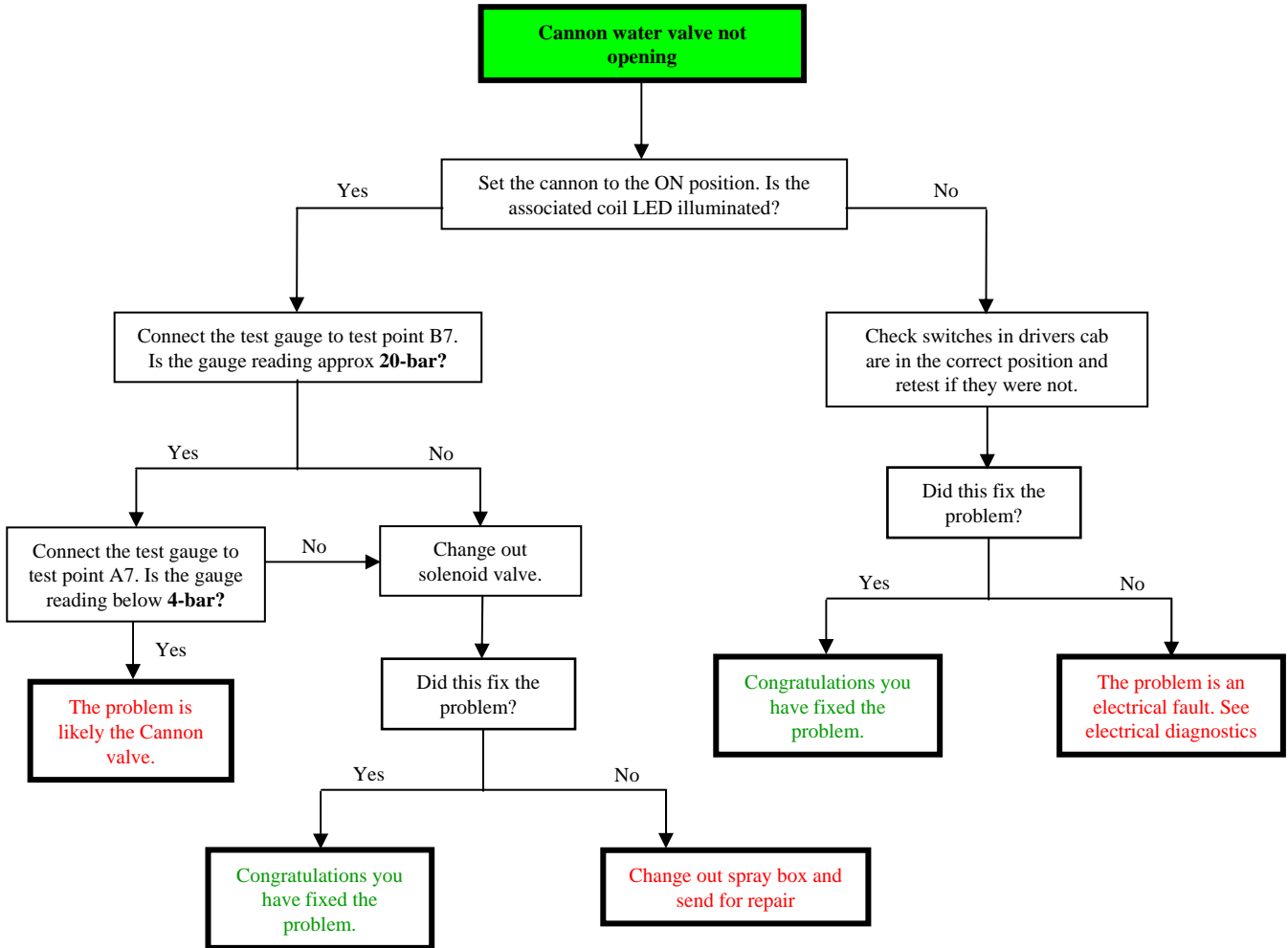
#### 1.3.1 System Diagnostics



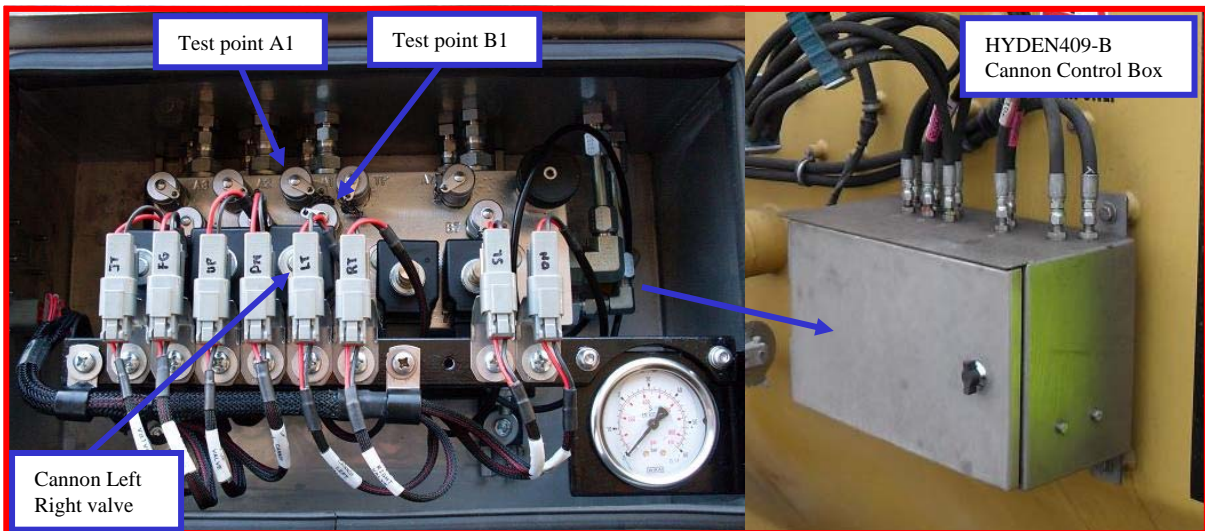
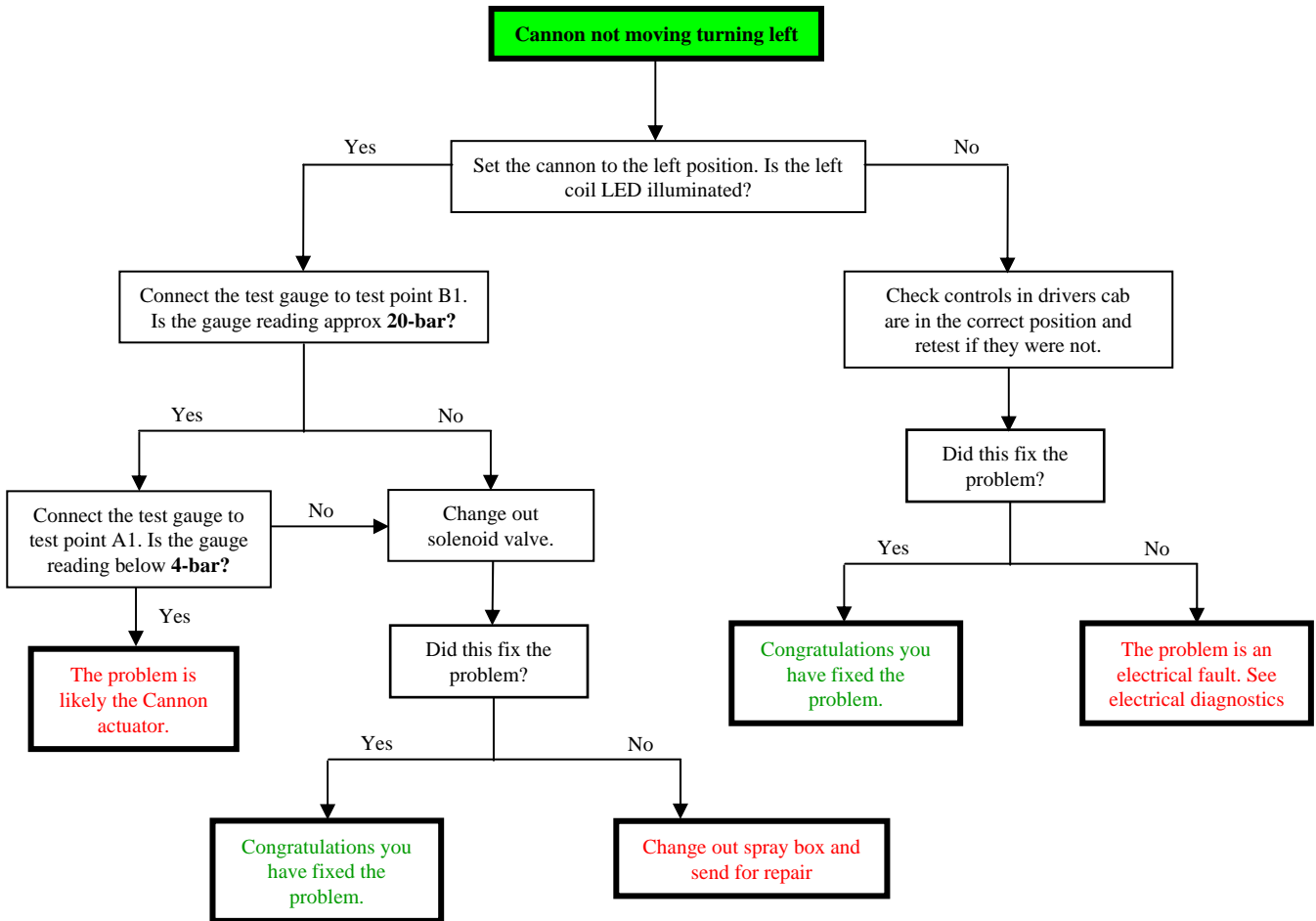


## 1.4 Remote cannons

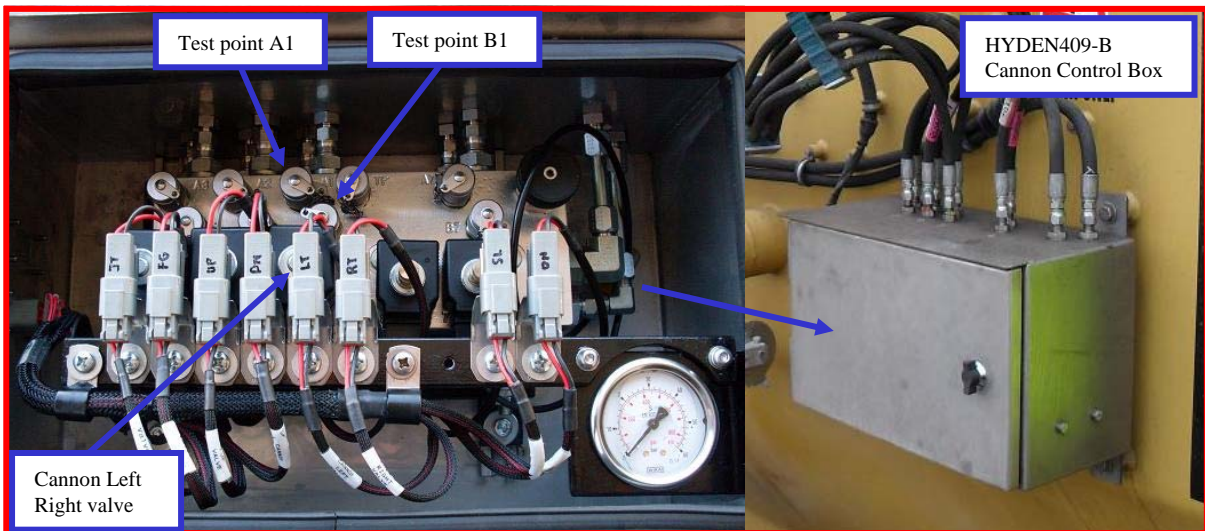
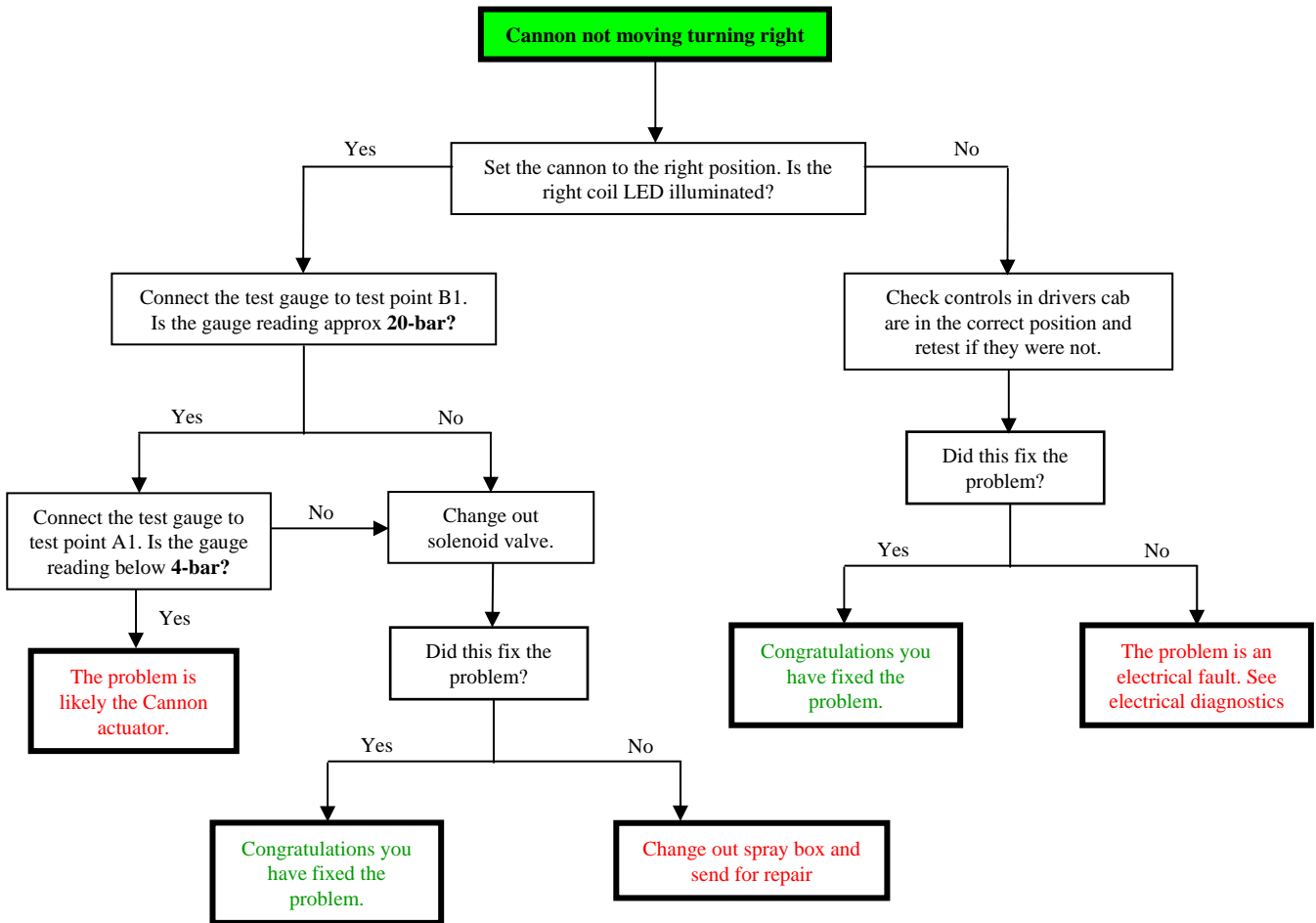
### 1.4.1 Remote cannon water control



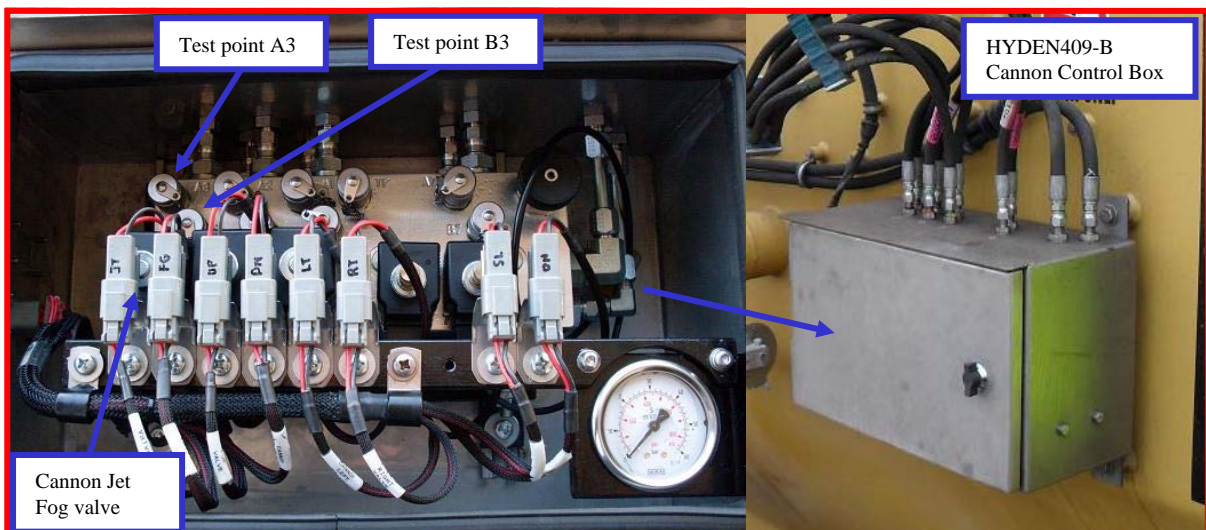
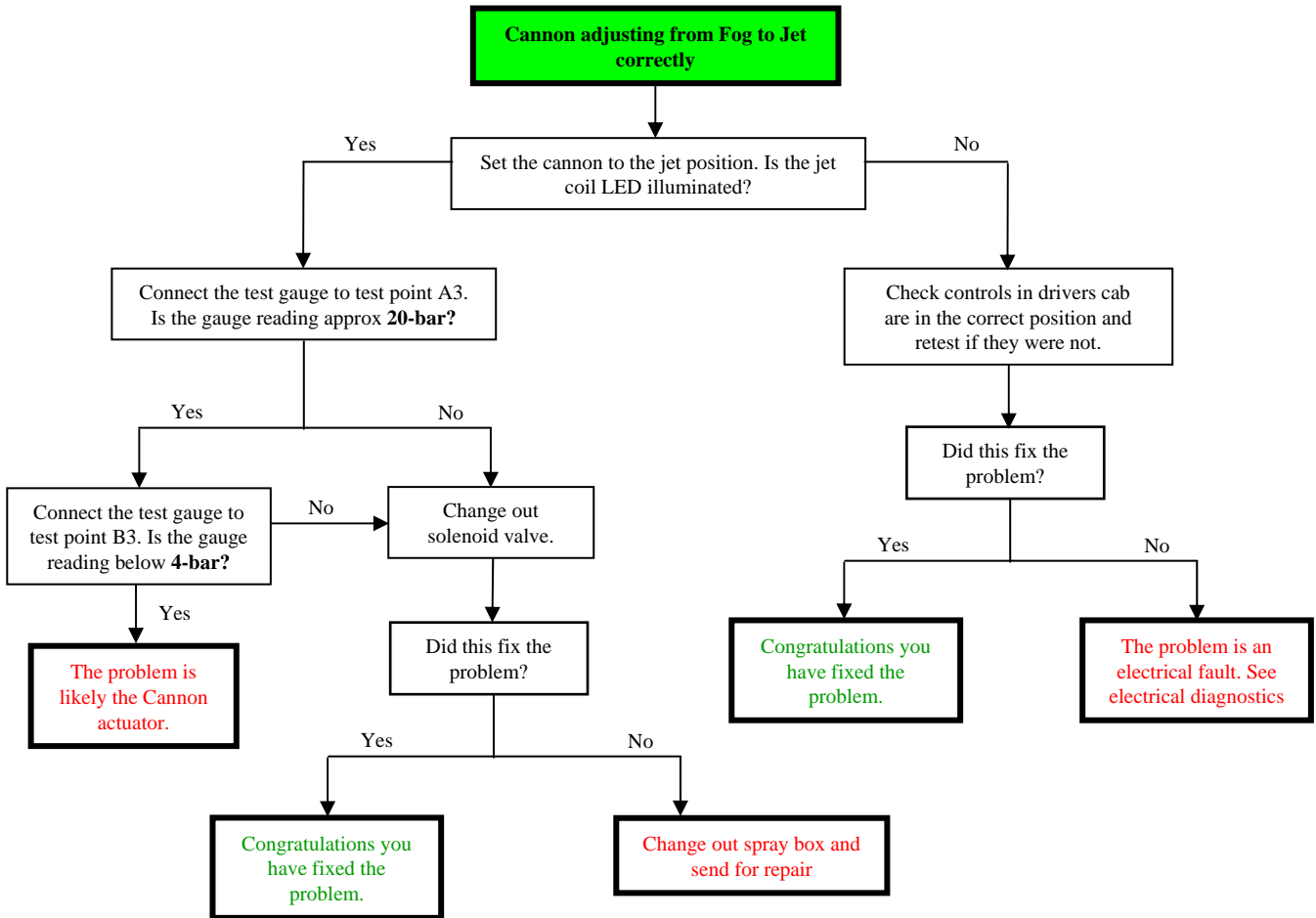
1.4.2 Remote cannon left control



### 1.4.3 Remote cannon right control

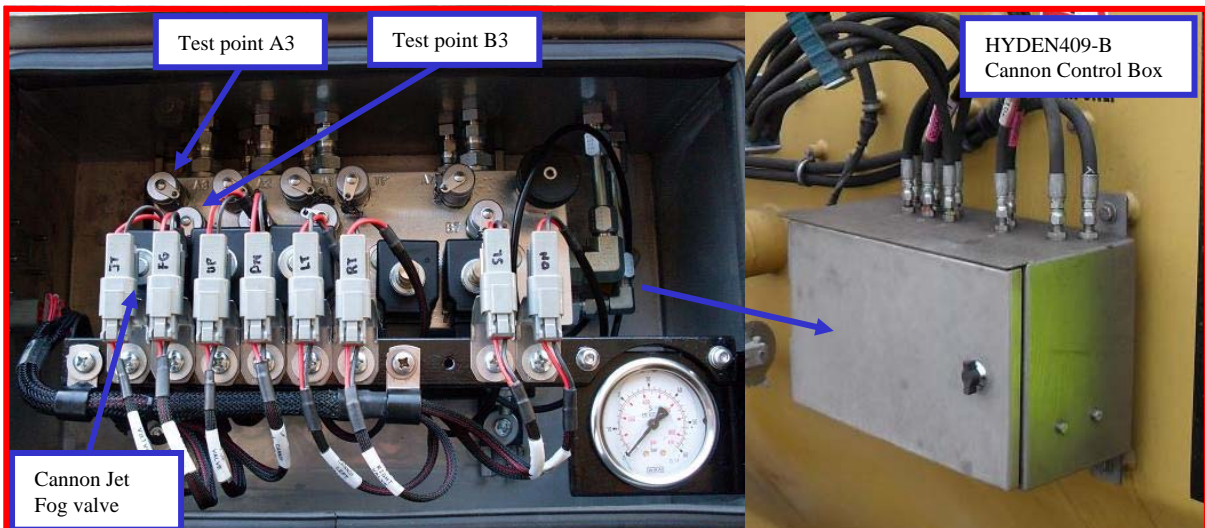
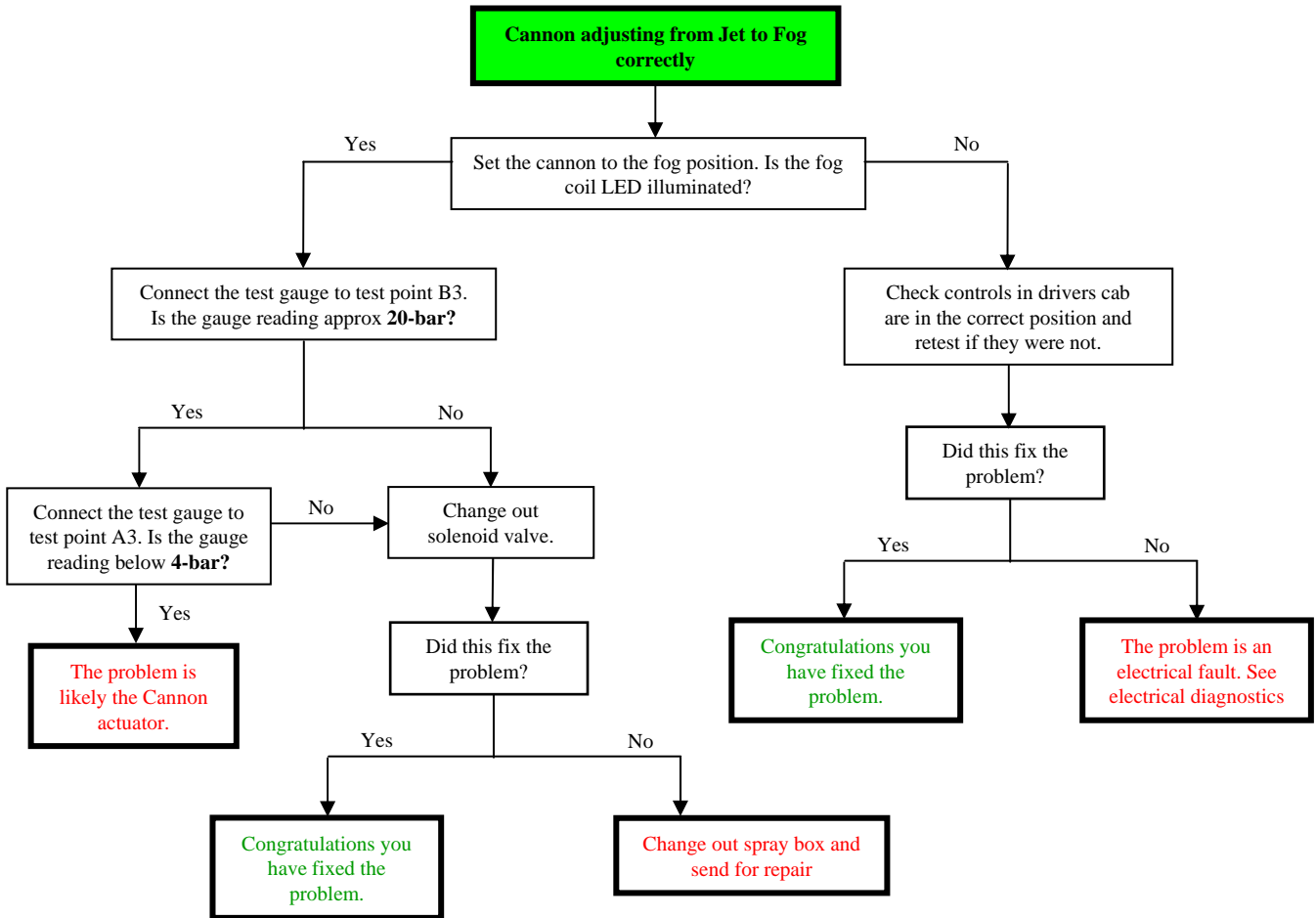


### 1.4.4 Remote cannon jet control

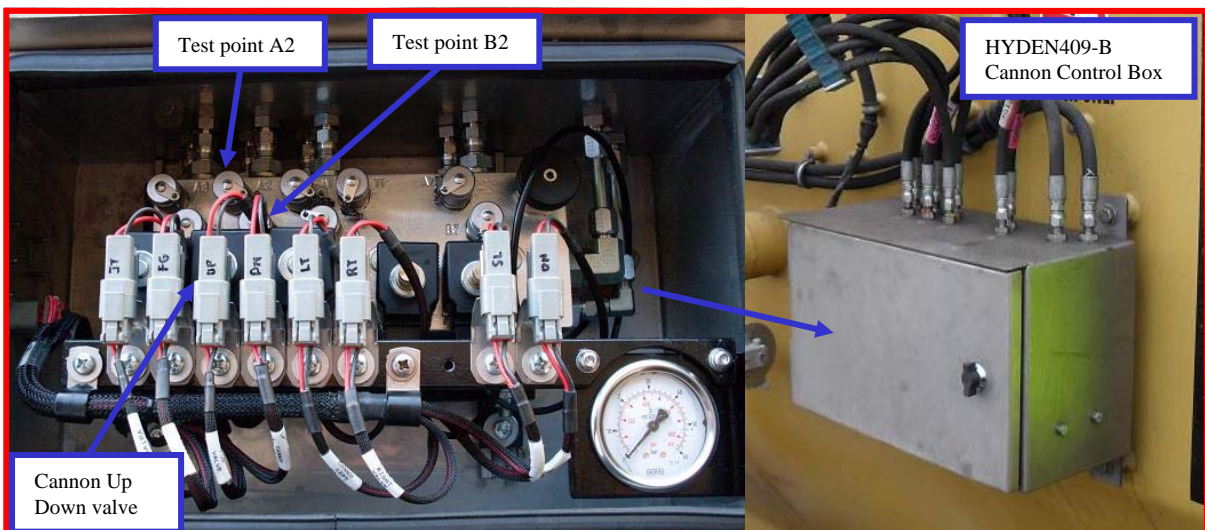
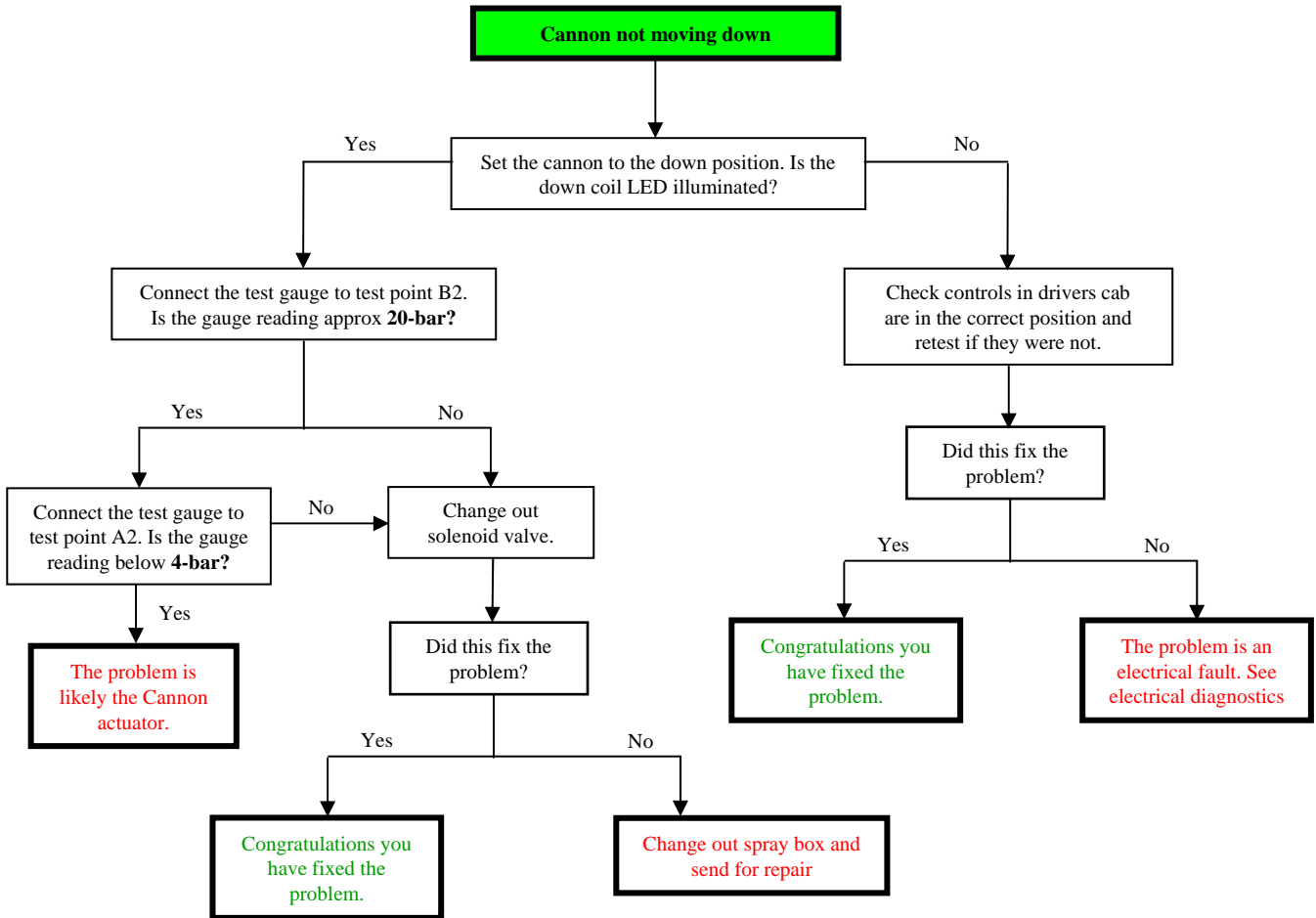




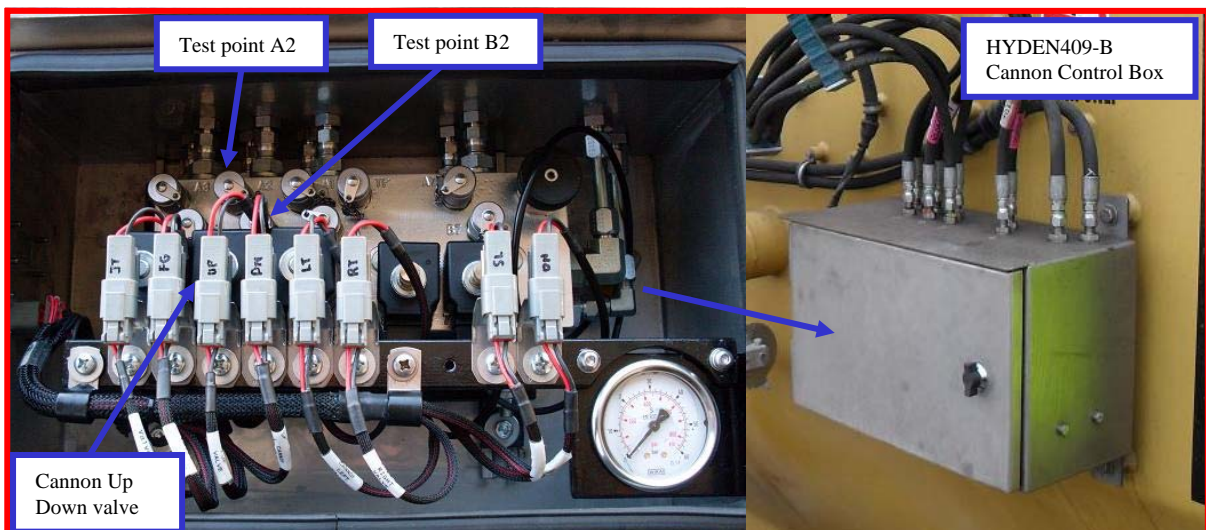
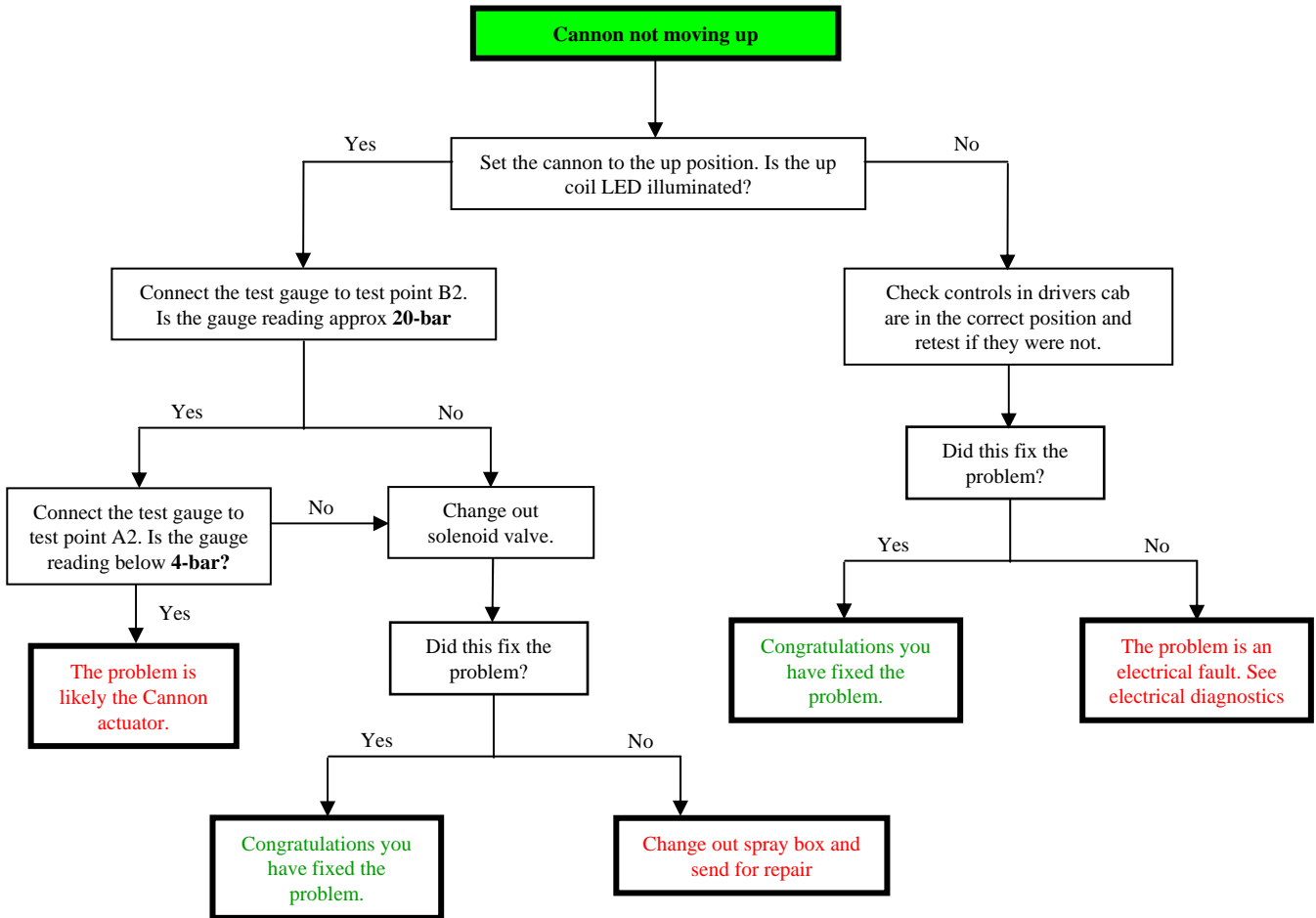
### 1.4.5 Remote cannon fog control



1.4.6 Remote cannon down control



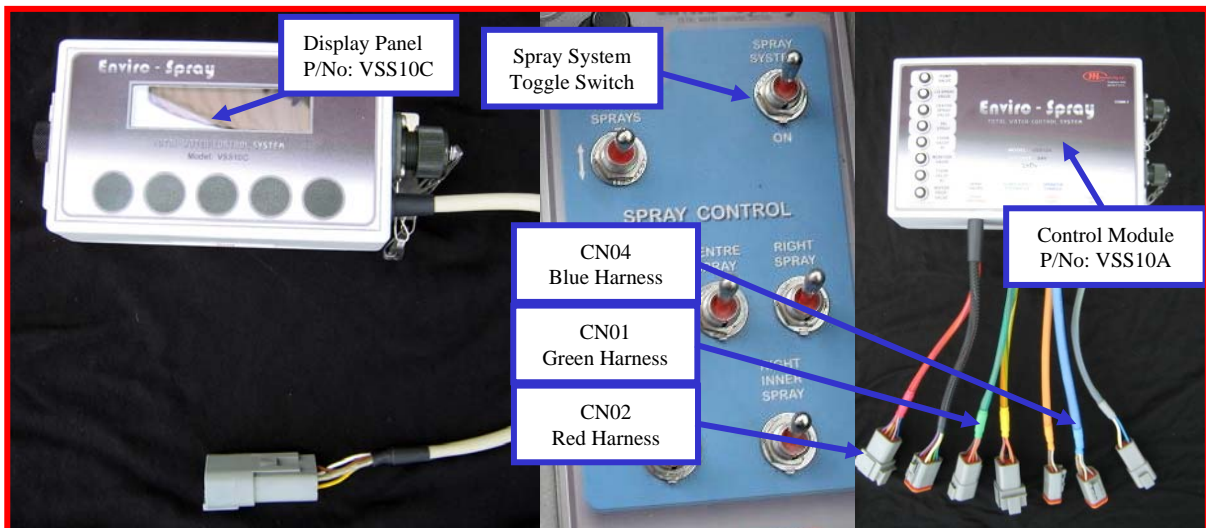
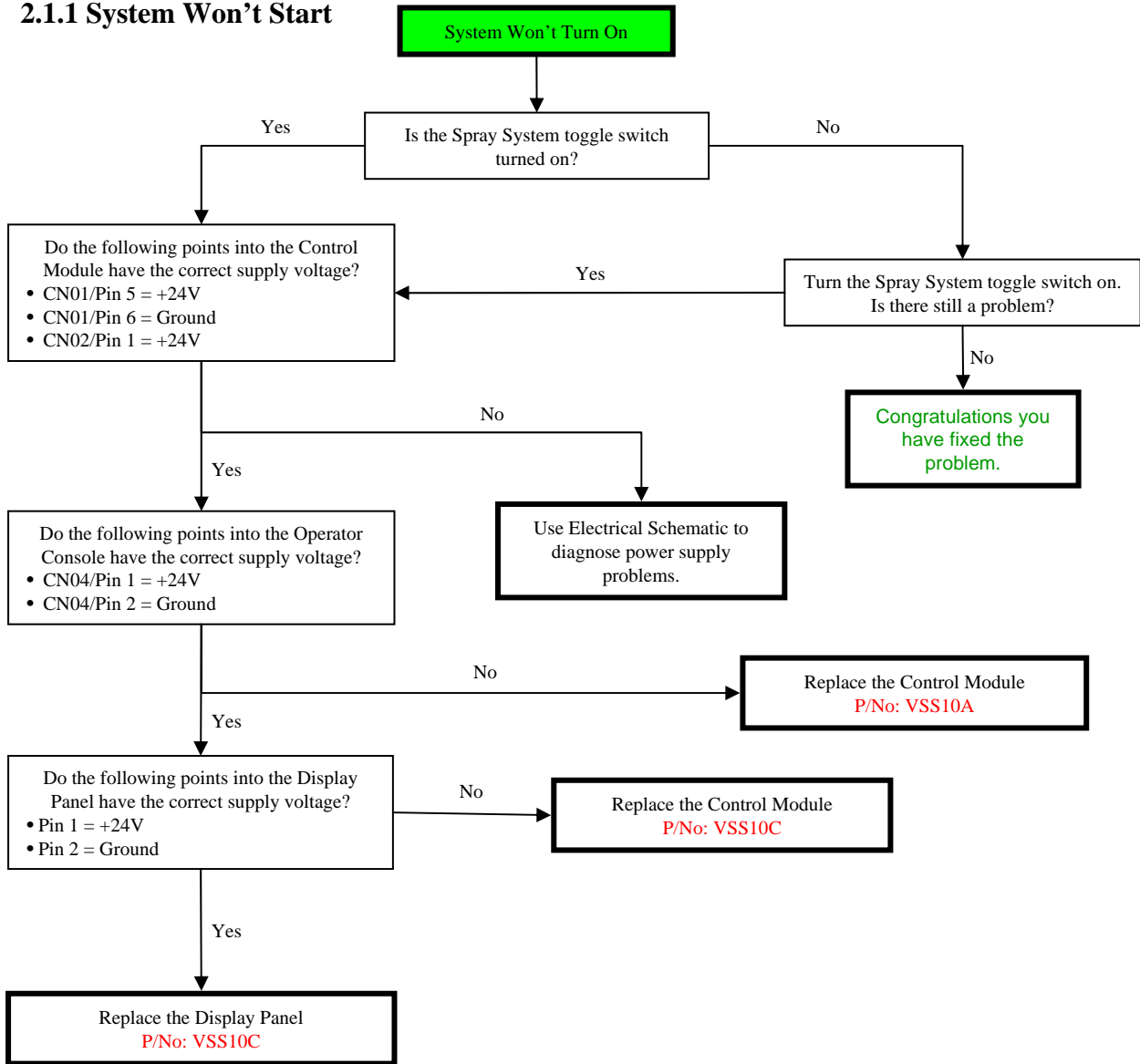
### 1.4.7 Remote cannon up control



# 2 Electric System Diagnostics

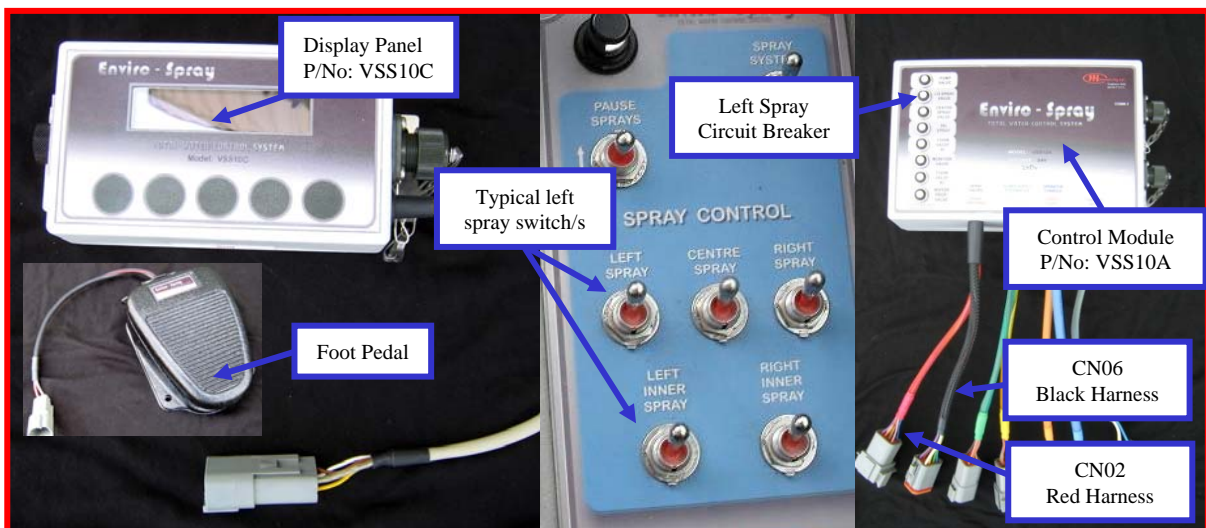
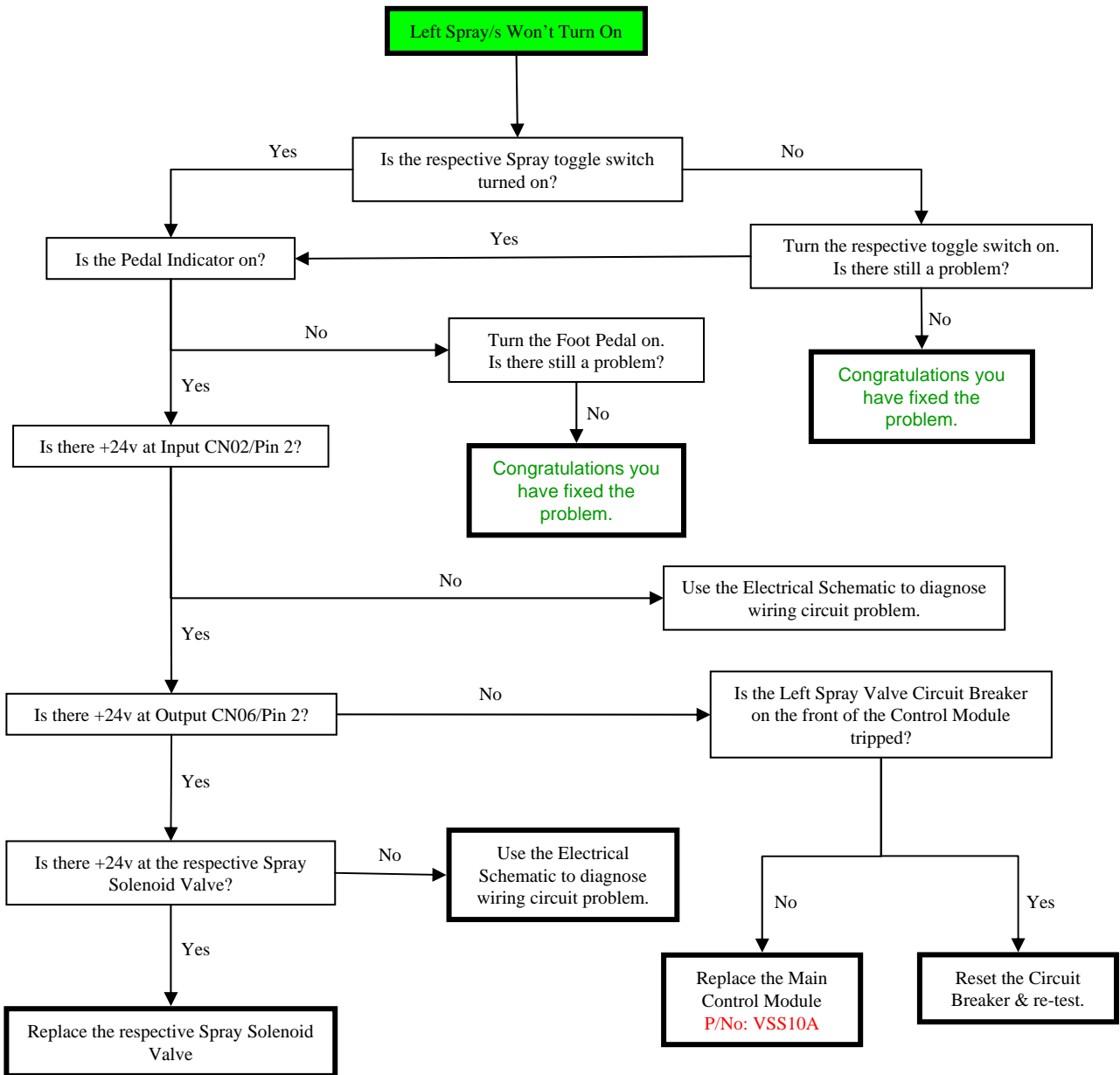
## 2.1 Spray system

### 2.1.1 System Won't Start

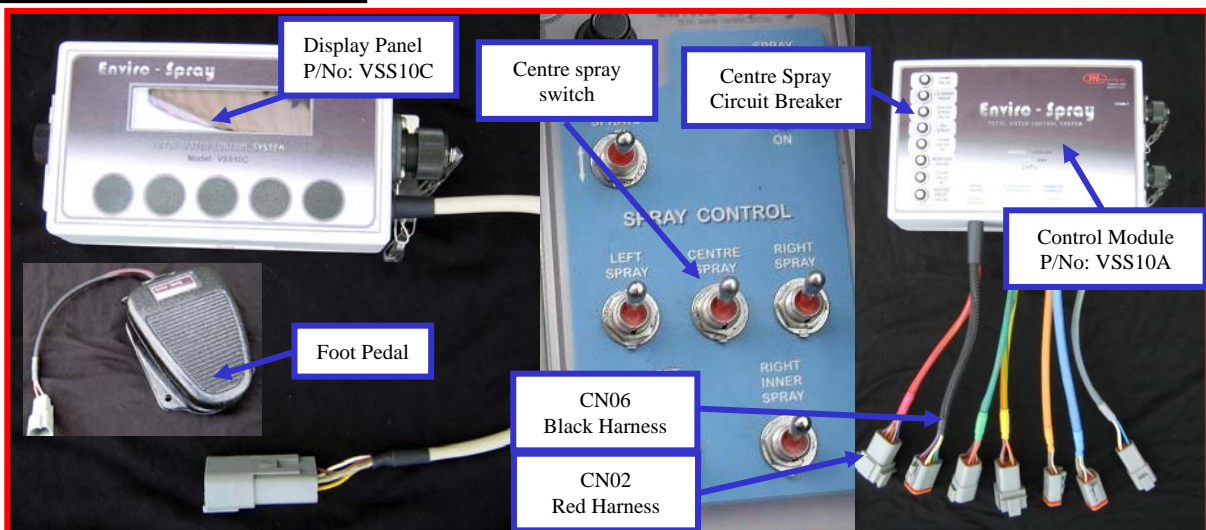
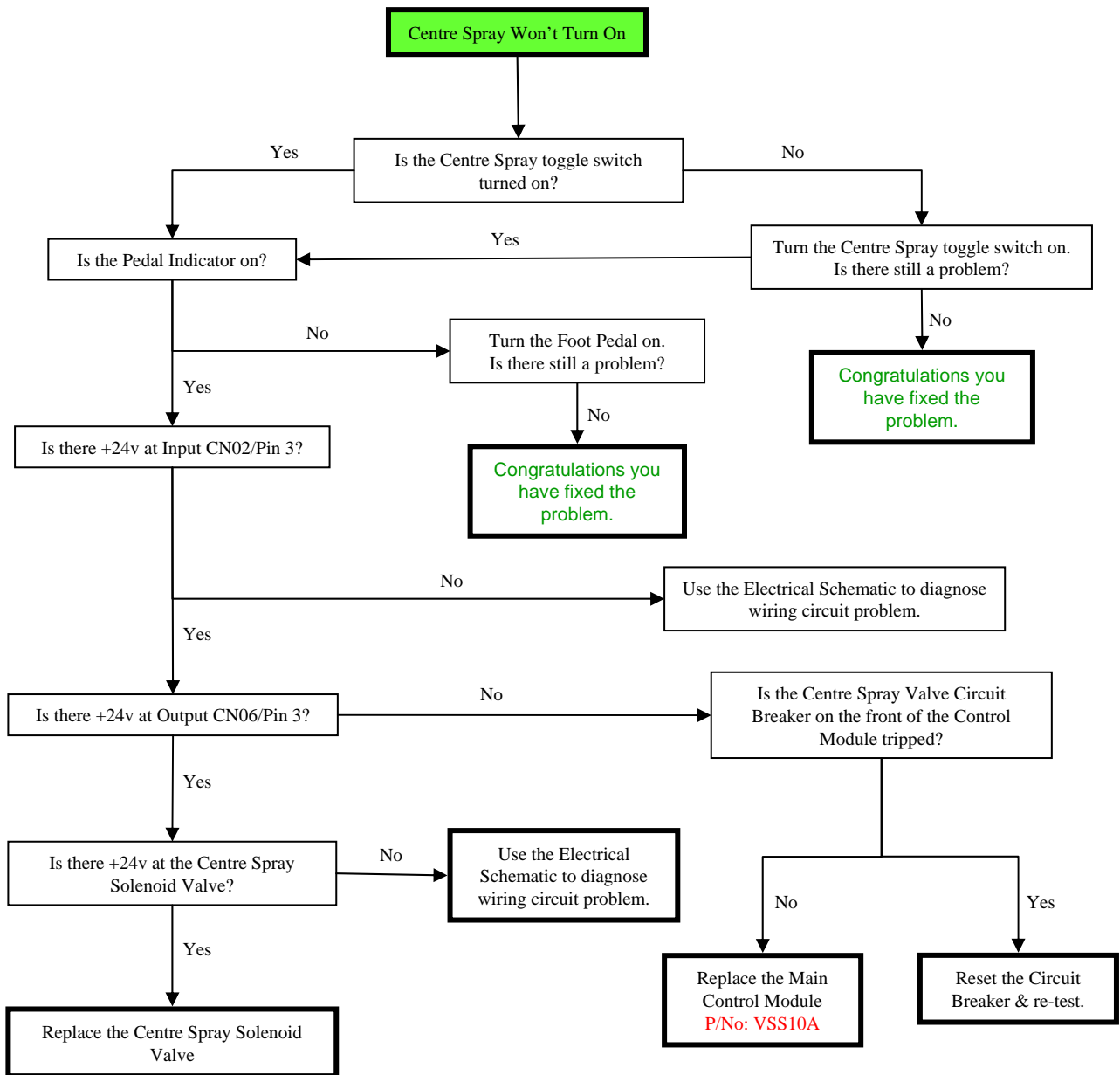




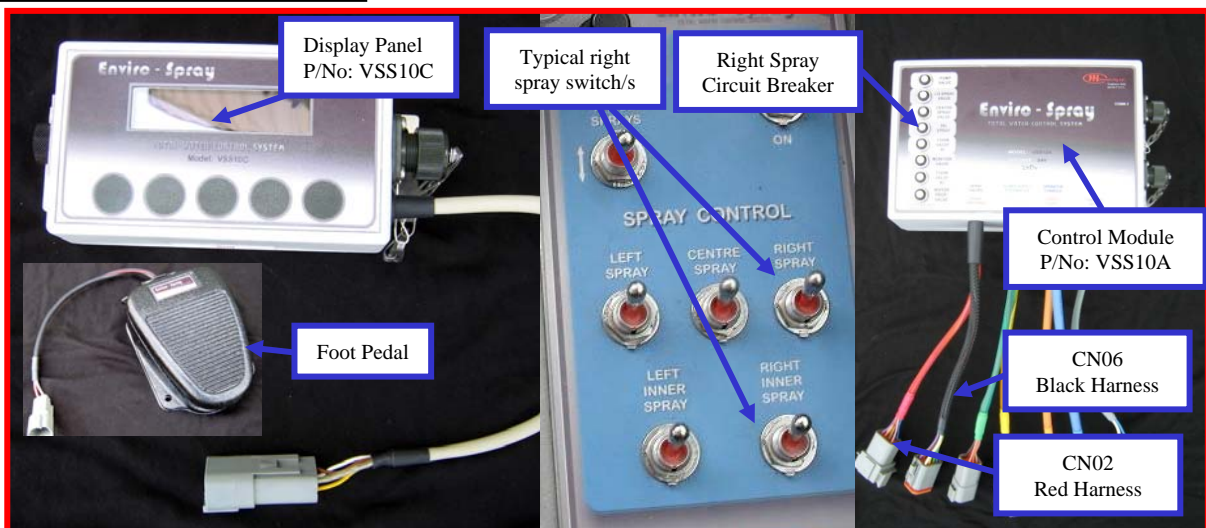
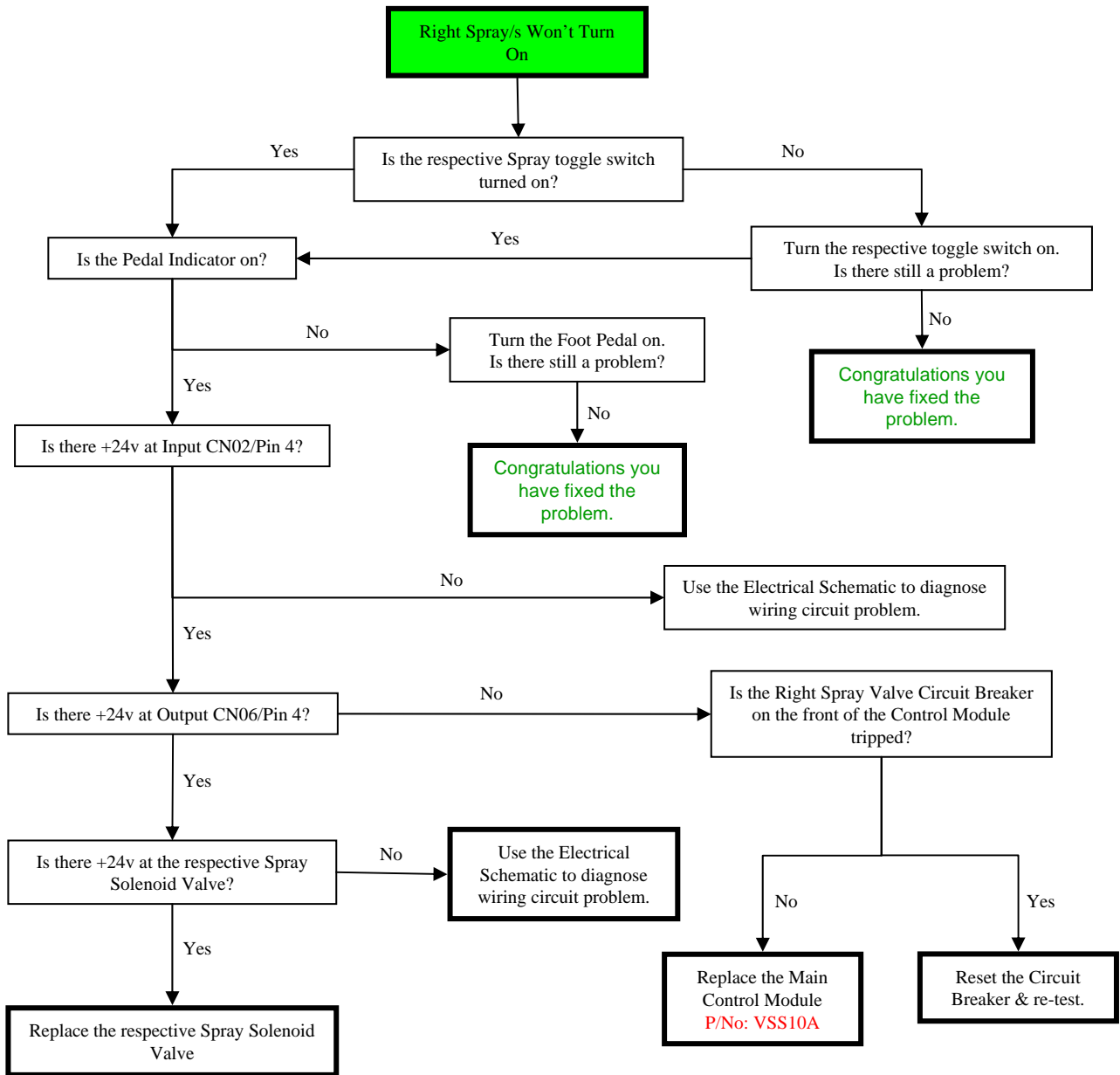
### 2.1.2 Left Spray/s Not working



### 2.1.3 Centre Spray Not working

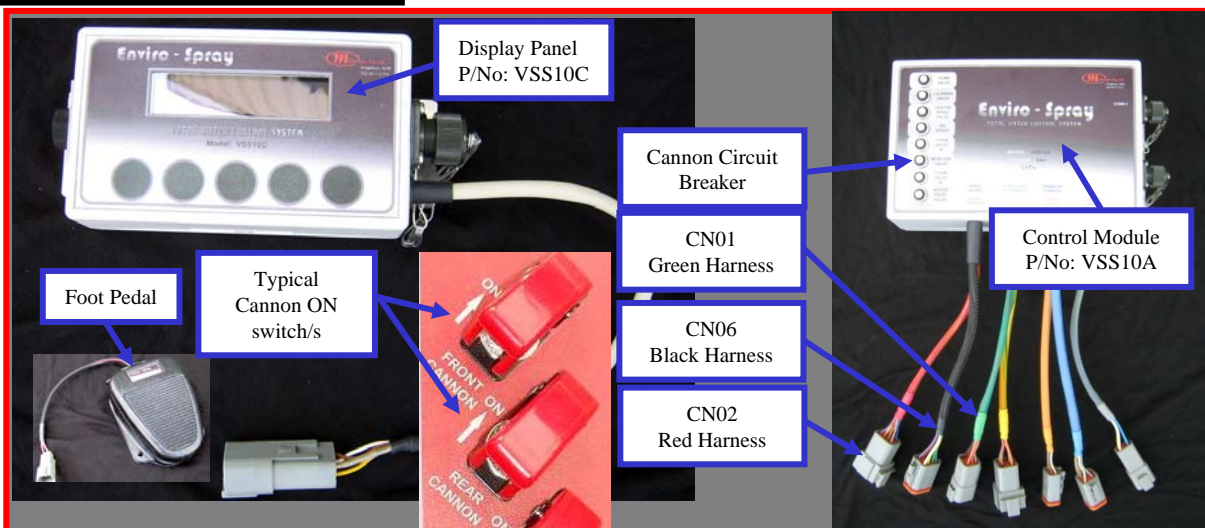
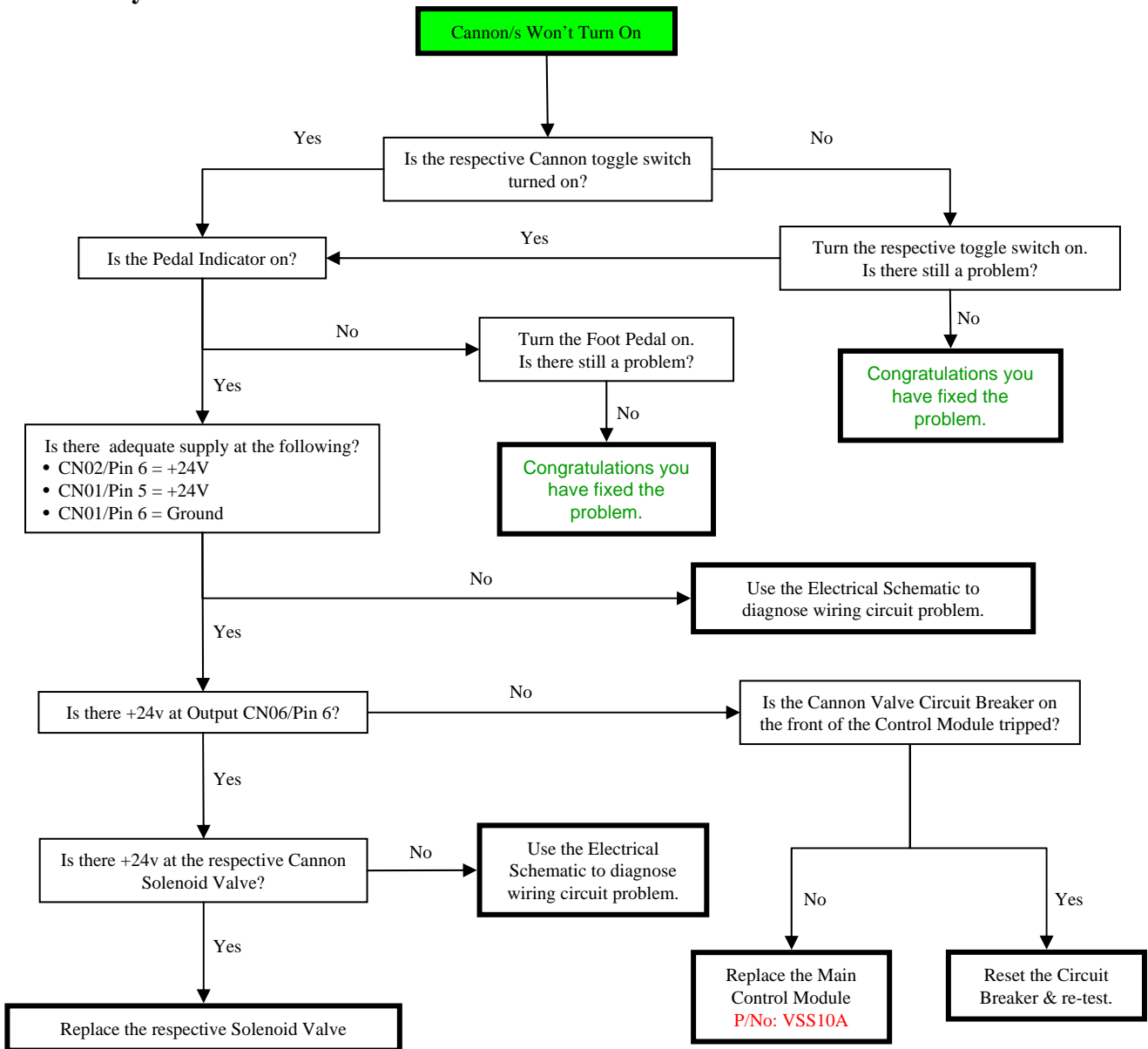


### 2.1.4 Right Spray/s Not working



## 2.2 Cannon System

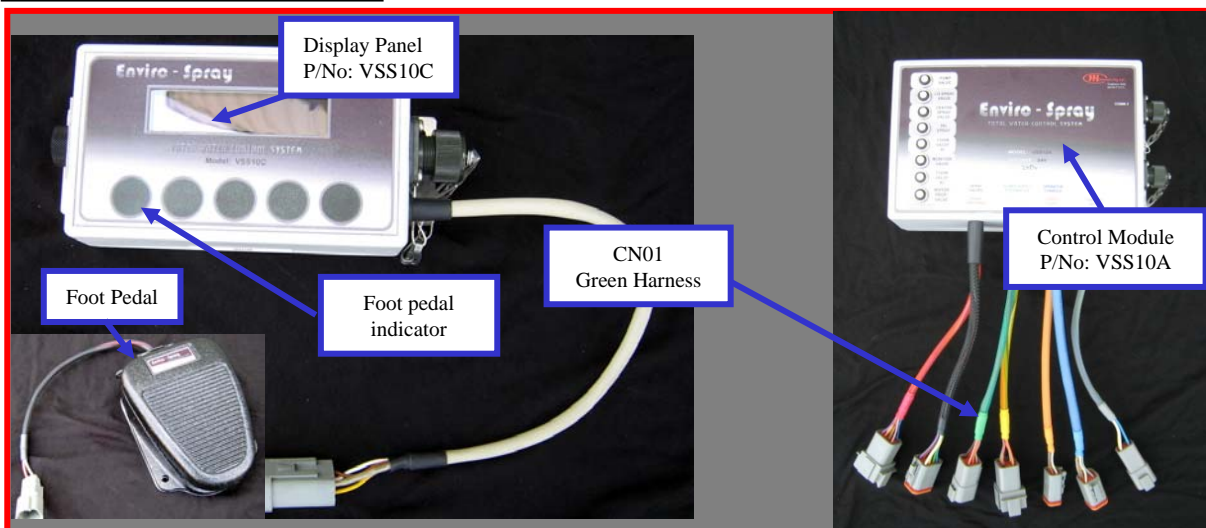
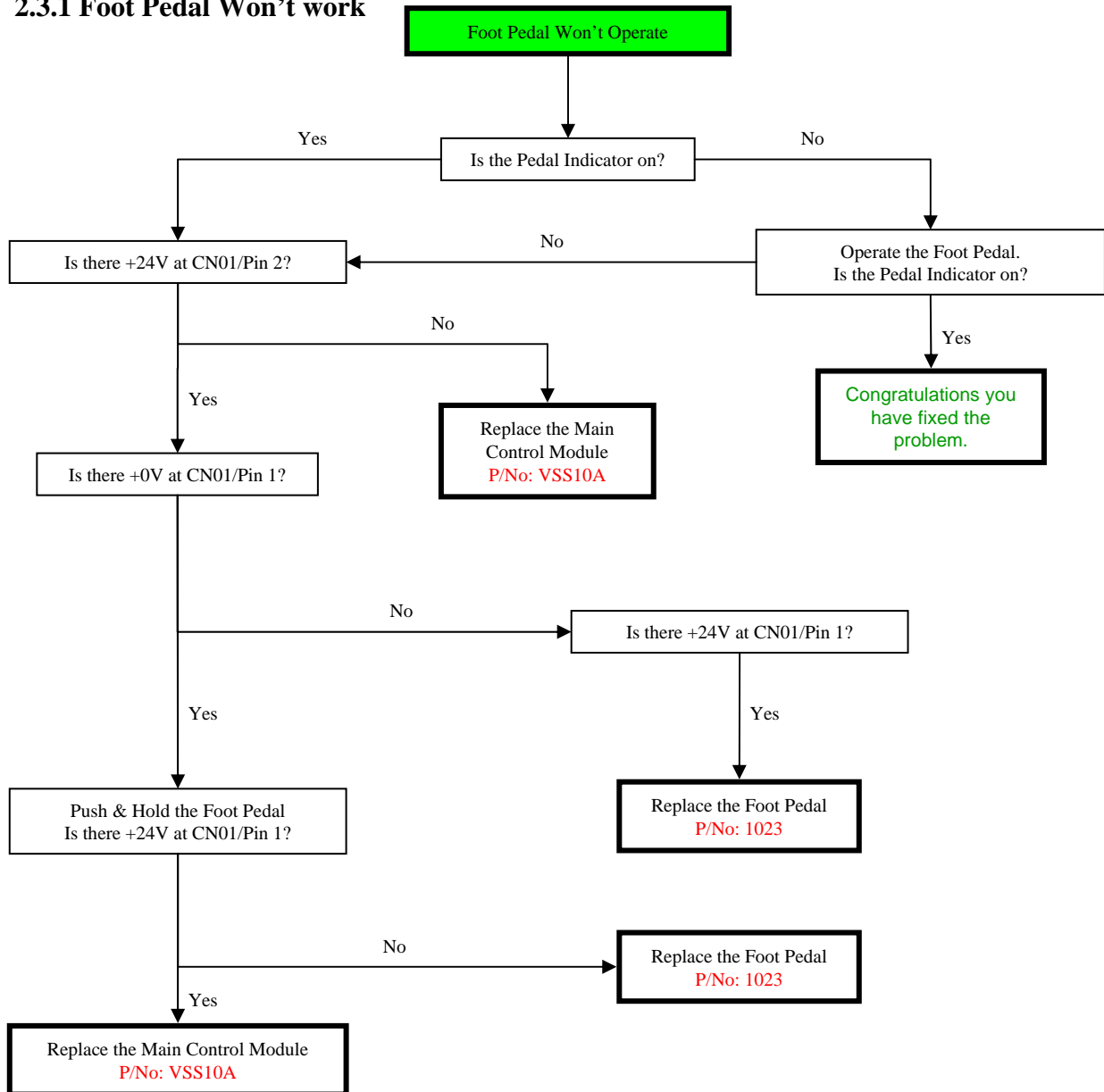
### 2.2.1 System Won't start





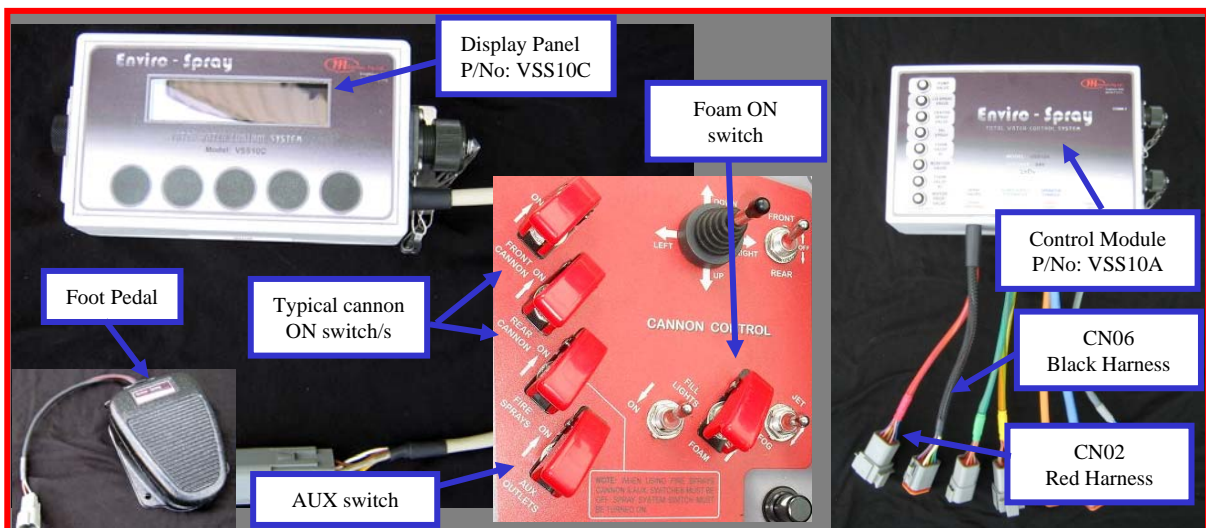
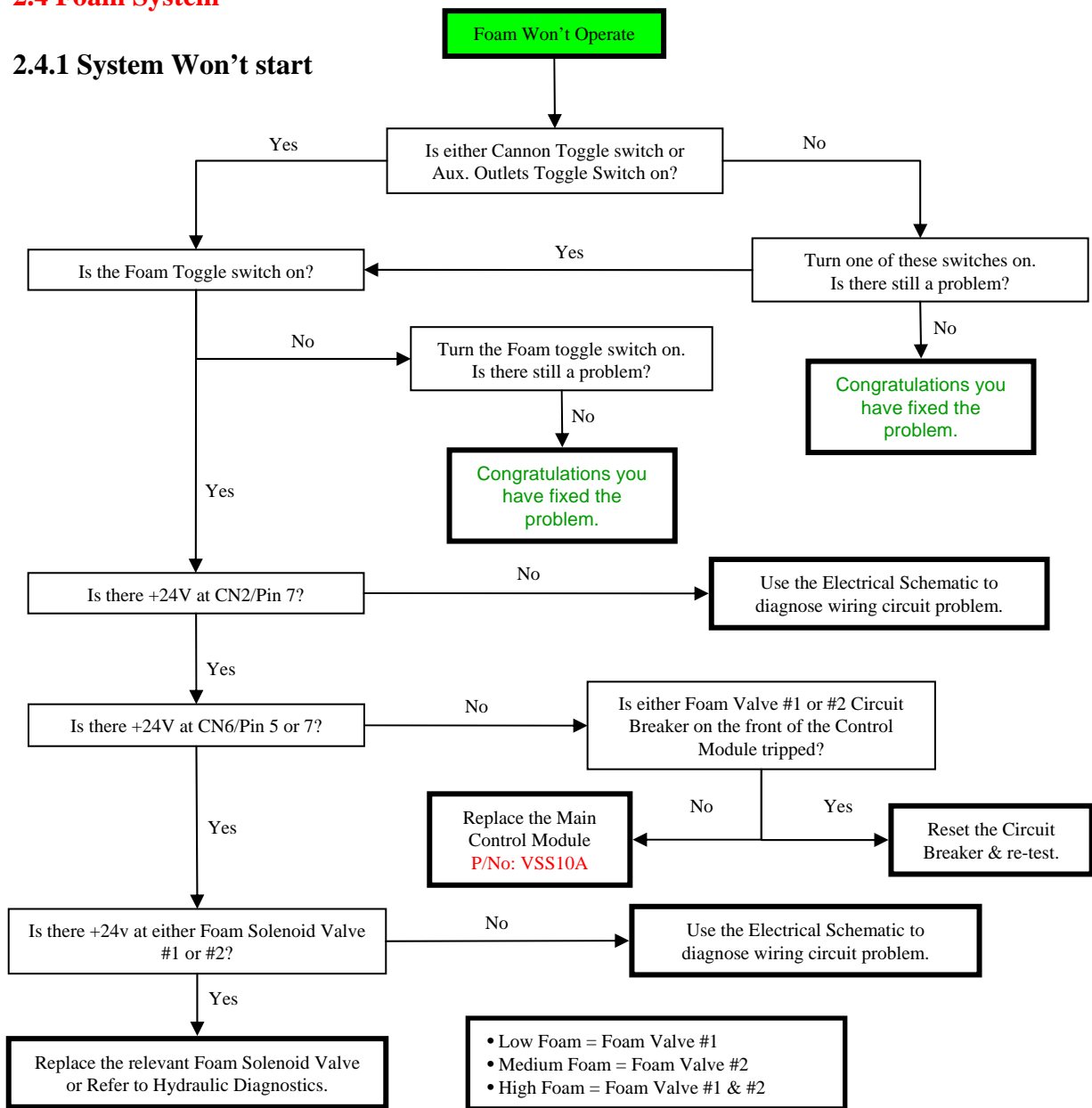
## 2.3 Foot Pedal

### 2.3.1 Foot Pedal Won't work



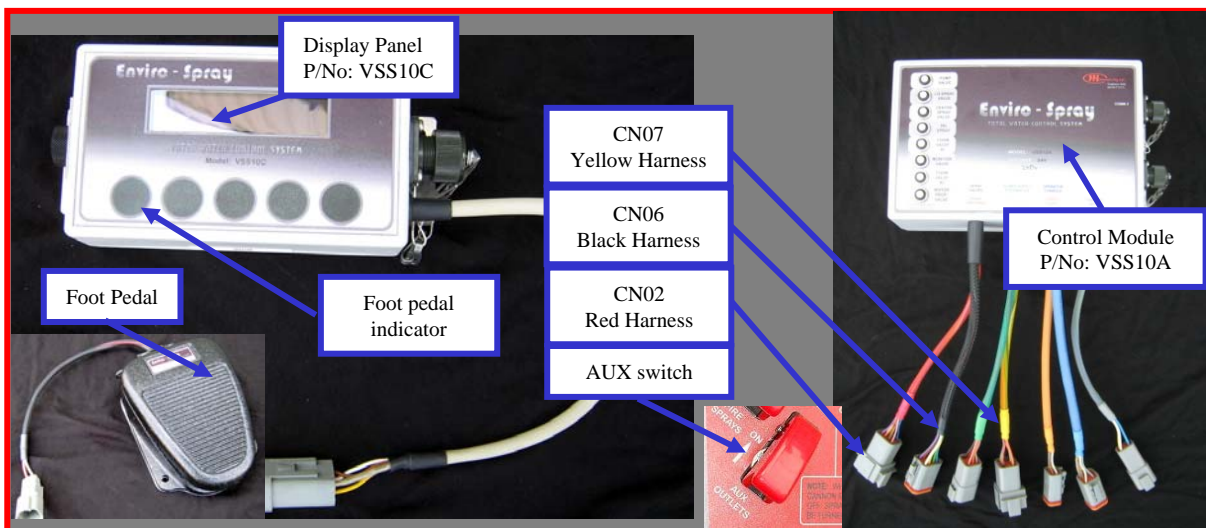
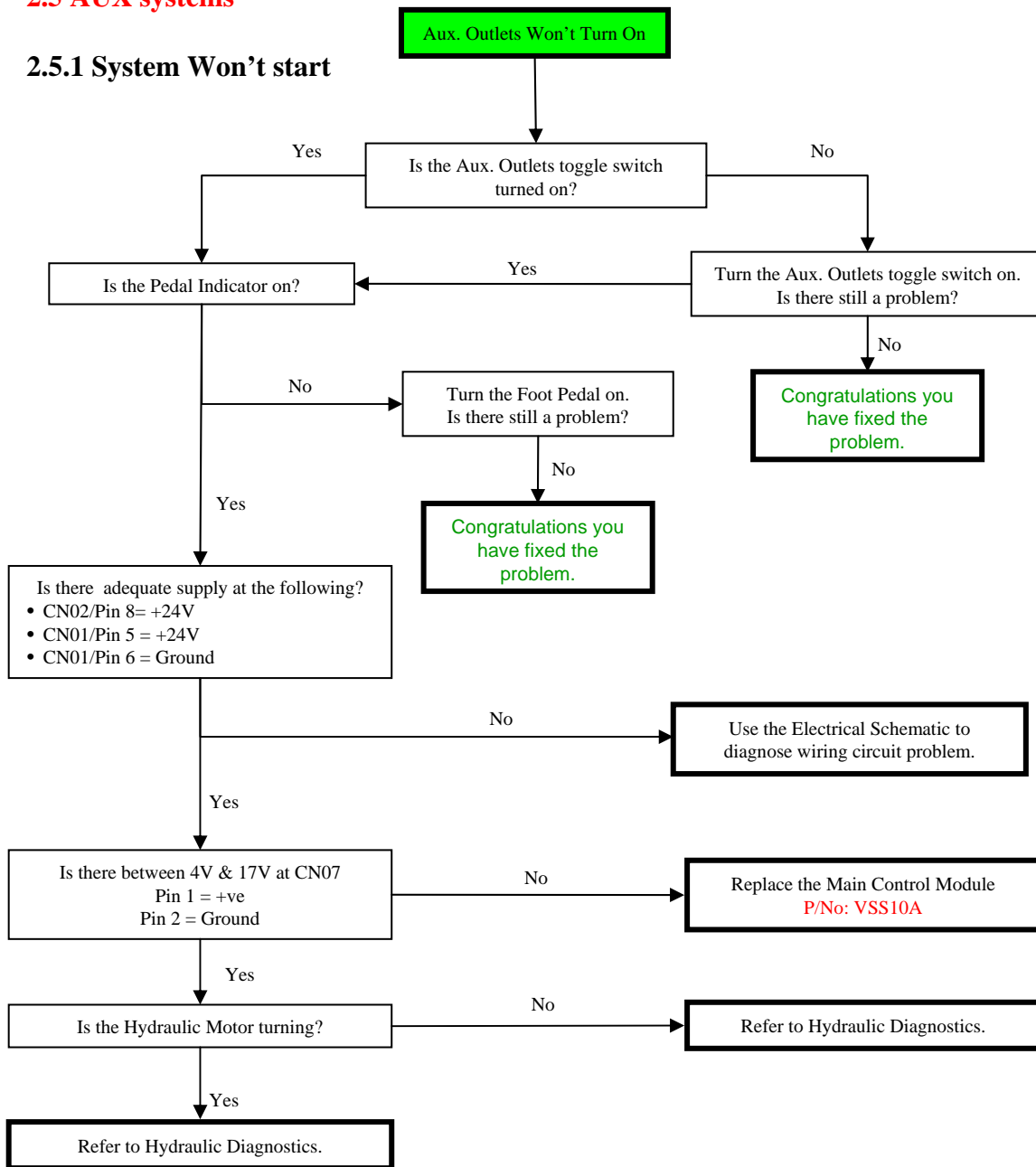
## 2.4 Foam System

### 2.4.1 System Won't start



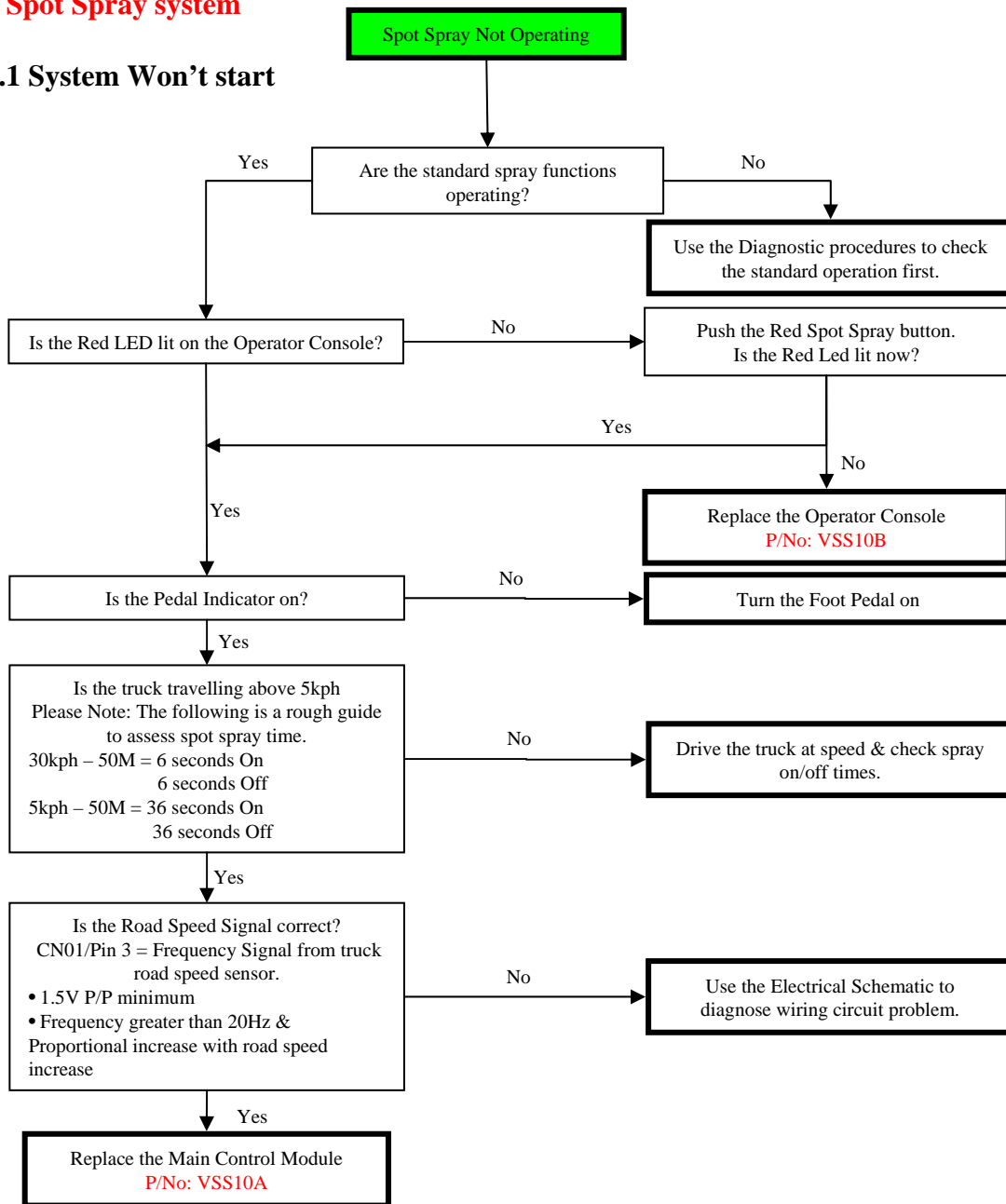
## 2.5 AUX systems

### 2.5.1 System Won't start



## 2.6 Spot Spray system

### 2.6.1 System Won't start





## 2.7 Road speed system

### 2.7.1 System Won't start

